



Dog-sledding near Longyearbyen

Svalbard



There are a few places on Earth that even the most seasoned traveller will feel privileged to visit, and one of these destinations is the high Arctic archipelago of Svalbard. A joy to explore

with a unique pulse and magnetic pulse.

Surrounded by the North Atlantic Ocean, just 1000km south of the North Pole, Svalbard covers an area of 62,000sq km. Despite its size the majority of the landscape is uninhabited and the result is a beautiful, glaciated and unspoiled environment that is unrivalled.



Polar bears and other fauna

Svalbard is arguably the best place in the world to see polar bears but, many other mammals also call this remote land their home: walrus, seals, whales (beluga, minke, orca), Svalbard reindeer, Arctic foxes and a wealth of migratory bird species.



Longyearbyen

The capital of Svalbard is a colourful, multi-national community with a raison d'être of its own. Its inhabitants have been drawn to the Arctic from far and wide, each answering their own 'polar' call.



Pyramiden

The Russian coal mining settlement is situated at the end of the Isfjord and is accessible by snowmobile and boat excursion. Evacuated in 1998, Ryramiden is a ghost town trapped in time, slowly decomposing.



Fossils

For the amateur fossil hunter the shoreline of the archipelago can be very rewarding; it is possible to take any uncovered fossil home as a souvenir. Excavations have found fossils over 150 million years old.

Note: Not all our accommodation is suitable for guests with reduced mobility. Please contact us to answer any questions you may have regarding our properties and to discuss their suitability for those with health conditions or impairments.

The five seasons of Svalbard

In the polar regions, the power of the sun can be felt more intensely than anywhere else in the world. She provides constant light in the summer and does not rise above the horizon in the winter, leaving the land soaked in mystical darkness. Her warmth is a gentle glow, her rays colour the sky in pinks, purples and golds, and sometimes she appears so close that you almost feel like you could touch her. Words cannot accurately describe the sheer magnificence of Svalbard. As the most readily accessible region of the polar north, the scenery and sheer beauty is the epitome of our Arctic dreams.



Light winter

MARCH TO MAY

The sun returns to the Isfjord and Longyearbyen at the beginning of March and is greeted with a week-long festival. At this time, a magical blue light illuminates the sky and you can feel the sun fighting for a presence. As the sun glides higher in the sky and her strength grows, daylight hours extend and by the end of April the midnight sun has returned. This is widely considered the best time for snowmobiling and dog sledding.



Spring

MAY

By May, the coastal ice is breaking up and boat trips along the fjord commence. The first flickers of summer appear as the snow begins to melt. Svalbard is beautiful at this time of year - snow covered mountain peaks form the backdrop to a glistening waterway. Winter and summer activities can be enjoyed.



Summer

JUNE TO AUGUST

The summer months attract ornithologists, nature lovers and outdoor enthusiasts to Svalbard's shores. The snow has disappeared and in its place is a land of lichen and delicate tundra flowers. The towering mountains, nutrient-rich waters and vast tundra are the perfect setting for kayaking, hiking, ice caving, fossil-hunting and boat excursions. This natural paradise attracts whales and walrus to the ice-free fjords, an abundance of birdlife to the cliffs, and polar bears and Arctic fox in search of food.



Autumn

AUGUST TO NOVEMBER

The midnight sun leaves Longyearbyen on 23 August and the wilderness gains the golden colours of autumn. Oranges, browns, reds and gold blanket the valleys. This period sees the welcome return of the Lady Aurora and you may even experience the first dusting of snow. Summer activities are still available at this time.



Dark winter

NOVEMBER TO FEBRUARY

Svalbard is bathed in darkness for two months, from mid-November to the end of January. It is not 'dark' however as your days are accompanied by the twinkling of moonlight and stars. It is even possible to observe the Aurora Borealis throughout the day - a unique experience. A wealth of winter activities are on offer including snowmobile tours, dog sled excursions and wilderness meals.

Longyearbyen

The focus point for visitors to Svalbard is Longyearbyen, a community of 2000 inhabitants on the shores of the Isfjord. It is the northernmost year-round settlement in the world and is the departure point for day excursions, expeditions and cruises, as well as a fascinating destination in its own right.



Snowmobiling near Longyearbyen



Radisson Blu Polar Hotel, Longyearbyen

The Radisson Polar Blu Hotel is located at the end of the main avenue in Longyearbyen.

Throughout the hotel large windows allow the views of the Hiorthfjellet, the Isfjord and the arctic light to flood inside. During the dark winter months, the focus changes to the warming wood-burning fireplace in the heart of the lobby. Sit and relax, before or after your activity.

Accommodation: 95 rooms including standard and superior rooms and suites.

- Airport: 8km Longyearbyen
- Arctic location
- Bed & Breakfast
- Complimentary WiFi
- Restaurant
- Year round activities available

Guide price from **£1,105 per person***

Funken Lodge, Longyearbyen

Funken Lodge (formerly the Spitsbergen Hotel) reopened in 2017 after a complete refurbishment. It offers accommodation of the highest standard and some of the best views in Longyearbyen, from its elevated position at the back of the town. For us, Funken Lodge is set apart from other hotel offerings in the city due to its rich heritage and connection with the Spitsbergen Coal Company; a history that, even today, can be felt and experienced. Yes, the property is modern but the pictures and artefacts

which line the public areas and guest rooms ensure that its 70 year story will never be forgotten.

Accommodation: 88 rooms including single and standard rooms and suites.

- Airport: 8km Longyearbyen
- Arctic location
- Bed & Breakfast
- Complimentary WiFi
- Restaurant
- Year round activities available

Guide price from **£1,194 per person***



* Guide prices based on 2-sharing a standard room (3 nights) and flights from London to Longyearbyen (via Oslo Gardermoen). Regional airports and single room supplements on request.

Longyearbyen and beyond

The untamed wild is all around Longyearbyen - the magnificence and scale of the scene is guaranteed to capture the heart of all explorers. Here you'll find glaciers groaning against a mirrored sea, jagged mountain peaks, vast icebergs and a barren ground where lichen and delicate tundra flowers grow.



Summer in Svalbard



Basecamp Hotel, Longyearbyen

As you enter Basecamp Hotel in the centre of Longyearbyen, you are welcomed with the warm glow of candlelight against driftwood panelled walls and, on occasions, the inviting smell of freshly cooked waffles. The atmosphere is both homely and rustic, making you feel instantly at ease and comfortable. The focus of the hotel is on the public communal areas, where guests are encouraged to meet and share experiences from their travels. There is a open-plan lounge and dining area, each adorned with pieces of wooden carved furniture,

local handicrafts and pictures and memorabilia which depict the history of the archipelago and tells stories of the trapper's who were based here in the late 18th and 19th centuries.

Accommodation: 16 rooms including single, standard and triple rooms and suites.

- Airport: 8km Longyearbyen
- Arctic location
- Bed & Breakfast
- Complimentary WiFi
- Year round activities available

Guide price from **£1,140 per person***

Isfjord Radio Station, Cape Linnè

Cape Linnè, on the island of Spitsbergen, is home to the Isfjord Radio Station, originally an important telecommunications link between Svalbard and mainland Norway.

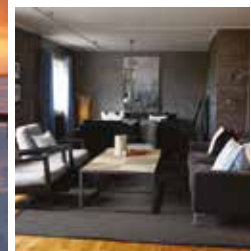
Established in 1933, 90km away from the civilisation of Longyearbyen, the station was destroyed during the Second World War before being re-built. Today parts of the old establishment have been preserved and form an integral part of the new boutique interior.

During the winter, when a blanket of snow covers the island (October to May), the property is reached by snowmobile or dog sled and in the summer (June to August) arrival is by boat, across the Isfjord.

Accommodation: 22 standard rooms with communal bathroom facilities.

- Airport: Longyearbyen
- Arctic location
- Complimentary WiFi
- Full board
- Winter activities available

Prices on request



* Guide prices for the Basecamp Hotel based on 2-sharing a standard room (3 nights) and flights from London to Longyearbyen (via Oslo Gardermoen). Prices for Isfjord Radio Station are available on request. Regional airports and single room supplements on request.



Polar fox



Dog sledding near Longyearbyen

Price includes

- Return flights to Longyearbyen, via Oslo Gardermoen
- 4 nights at the Radisson Blu Polar Hotel, Longyearbyen (Bed & Breakfast)
- All excursions detailed
- Single room supplement on request

Departures

Daily between Nov – Jun

Duration

5 nights

Guide price based

on 2-sharing from

£1,429 per person

Svalbard: The land of our Arctic dreams

Itinerary: 6 days / 5 nights

During the dark winter months (Nov - Feb) the moon and twinkling stars illuminate the snow-covered vista below. At this time of year, the Aurora Borealis can be observed throughout the day if weather conditions permit. By February the solar rays are desperate to return and a golden glow burns on the horizon. The ever-changing light show performed is truly magical - look upwards and see a blue sky tinted with pinks and dotted with the constellations.

Day One: On arrival at Longyearbyen airport, self-transfer to the Radisson Blu Polar Hotel using the airport bus service. Overnight at the Radisson Blu Polar Hotel in Longyearbyen (page 84).

Day Two: Guided tour of Longyearbyen

After breakfast you will be met by a local guide and, together with a small group, you will enjoy a 2-hour minibus tour of the town and its surrounding area. You will not travel far, as the whole archipelago has only 46km of roads in total, but the information you will gather will help you to appreciate the way of life in the high-Arctic, its history, flora and fauna.

This afternoon, visit the Svalbard Museum - close to your hotel - to learn more about the geography and climate of the region, wildlife and polar expeditions. Evening at leisure. Overnight at the Radisson Blu Polar Hotel.

Day Three: Snowmobile excursion

There are a host of snowmobile excursions available on Svalbard, everything from 3 hour experiences to 11 hour expeditions. The package price includes a 3 hour Polar night safari or a 3 hour tour to Camp Barentz (dates dependent). These trips can be upgraded to longer tours at a supplement.

Within a few minutes snowmobile-drive from Longyearbyen, the landscape becomes crisp and isolated and you can see for miles around, towards the mountain peaks and over the frozen fjords. This blank, white canvas is a natural wilderness in the truest sense. Keep your eyes peeled for the Svalbard reindeer, which can often be spotted along your route. From November to January, your experience will be under the cover of darkness as the sun does not breach the horizon at this time of year. Sparkling constellations will light your way. You may even enjoy a sighting of the Aurora Borealis.

From February the daytime skies are a rich blue, and by April you will be travelling at the time of the midnight sun. Evening at leisure. Overnight at the Radisson Blu Polar Hotel.

Day Four: Dog-sled tour

Dog sledding has long been a tradition on Svalbard, and today we have included a short tour (3-4 hours) for your enjoyment. As with the early explorers, you will use your team of husky dogs to navigate the silent snow-covered tundra. Our excursions are hands-on allowing guests to help harness their dogs as well as try their hand at mushing. Of course, if you prefer you can just sit back on the sled and relax as the magical high-Arctic landscape passes-by. Evening at leisure. Overnight at the Radisson Blu Polar Hotel.

Day Five: Day at leisure. Opportunity to enjoy some last minute shopping, or to participate in another excursion. Sunvil can prebook an Arctic wilderness evening, ice caving and boat excursions along the Isfjord to Barentsburg and Pyramiden (from 1 May). Overnight at the Radisson Blu Polar Hotel.

Day Six: After breakfast, self transfer to Longyearbyen airport for your return flight to the UK.

The Arctic outpost and you

Itinerary: 7 days / 6 nights

At the edge of human existence, the Isfjord Radio station is 90km from Longyearbyen and stands in isolation with only the wilds of Svalbard and the Arctic Ocean for company. It is a destination that offers you silence and drama, and one at which you are in the hands of Mother Nature. It is like no where else in Europe, and potentially the world.

Our six night itinerary combines Svalbard's capital with this wilderness hotel. An adventure that will excite your senses and leave you with a lifetime of memories.

Day One: On arrival at Longyearbyen airport you will be transferred to the Basecamp Hotel. Overnight at the Basecamp Hotel in Longyearbyen (page 85).

Day Two: Day at leisure in Longyearbyen. Take the time to visit the Svalbard Museum which houses exhibitions covering a range of topics including geography, climate, geology, flora, wildlife, polar expeditions and hunting. It is an excellent introduction to the islands and highly recommended by the Sunvil team. Tours of Longyearbyen are available and can be pre-booked by Sunvil. Overnight at the Basecamp Hotel in Longyearbyen.

Day Three: Hike on the Nordenskiöld glacier

There is no better way to get close to nature than to take a walk. Today, we have included a full-day guided hike on the Nordenskiöld glacier that will challenge you both physically and sensually. The tour starts with a rib-boat safari along the Isfjord, a magnet for wildlife during the summer months. Keep your eyes peeled for seabirds, walrus, belugas and even polar bears. Your hike on the glacier will put you as one with the arctic nature and will afford plenty of opportunities for photographs. A wilderness lunch and evening meal are included before returning to Longyearbyen by boat. Overnight at the Basecamp Hotel in Longyearbyen.

Day Four: A journey to Isfjord Radio Station and a visit to Barentsburg

From the glacier to the outermost part of the Isfjord. Your transfer is by boat and will offer you the chance to observe the fantastic fjord scenery at close quarters. The journey includes a stop at the Russian settlement of Barentsburg and a guided tour of the mining town. Lunch is provided on arrival at the Isfjord Radio Station before your guide will lead you on a tour of the Cape Linné district.

Whilst remote, the Isfjord Radio Station is a beautiful boutique hotel of charm. Guests are welcomed as friends. There are no airs and graces, and yet

there is an underlying level of quality and comfort. Here you explore, experience, learn, eat and relax together as a group. Overnight and evening meal at Isfjord Radio Station at Cape Linné (page 85).

Day Five: Optional excursions

Free time at the edge of the Isfjord. A range of guided activities* can be pre-booked for guests, depending on the day of your stay: wild swimming in the fjord, sauna experiences, guided hikes, canoeing and birdwatching. Lunch, evening meal and overnight at the Isfjord Radio Station at Cape Linné.

Day Six

After breakfast, there is time for a guided hike or maybe a swim in the Arctic Ocean followed by a sauna. A warm lunch is served before you depart towards Longyearbyen. On arrival in the capital you will be transferred to the Basecamp Hotel. Overnight at the Basecamp Hotel in Longyearbyen.

Day Seven: After breakfast you will be transferred to Longyearbyen airport for your return flight to the UK.

Price includes

- Return flights to Longyearbyen, via Oslo Gardermoen
- 4 nights at the Basecamp Hotel, Longyearbyen (Bed & Breakfast)
- 2 nights at Isfjord Radio Station, Cape Linné (Full Board)
- All excursions detailed
- Single room supplement on request

Departures

Daily between Jul – Sep

Duration

6 nights

Guide price based on 2-sharing from

£2,498 per person

* It is important to note that to move outside of the Isfjord Radio Station Hotel you need to be accompanied by a guide at all times.





Isfjord

Price includes

- Return flights to Longyearbyen, via Oslo Gardermoen
- 3 nights at Funken Lodge, Longyearbyen (Bed & Breakfast)
- All excursions and experiences detailed
- Single room supplement

Departures

Daily between Aug – Sep

Duration

3 nights

Guide price based

on 2-sharing from
£1,427 per person



Funktionærernes Restaurant, Funken Lodge

Autumn in the Arctic: An activity and gastronomic break

Itinerary: 4 days / 3 nights

The landscape of Svalbard transforms before your eyes as autumn sets in. The days become shorter and glorious golden hues take hold of the mountains, you may even see the first dustings of snow. We love this time of year. It offers all of the experiences of the summer plus the cosiness of the fall. You may even be blessed with displays of the Aurora Borealis from the skies above.

Day One: Arctic wilderness evening

On arrival at Longyearbyen airport, self transfer to Funken Lodge using the airport bus service. This evening, you will be transferred 10km outside of the capital to Camp Barentz in the Advent Valley for a relaxed evening amidst a pristine natural backdrop. Reindeers and Arctic foxes are often observed in the close surroundings and, away from the city, you can enjoy a 360° panorama of the mountains and dusky sky. A local dinner is served around a roaring fire and a presentation on polar bears and local folklore is provided. Overnight at Funken Lodge in Longyearbyen (page 84).

Day Two: A visit to coal mine number 3 and the world's northernmost brewery

Longyearbyen was settled by the mining industry and for many years this, alongside Arctic expeditions and scientific research, was the life-blood of the archipelago. In 2017, after 100 years of Norwegian coal mining in Longyearbyen, the last commercial mine closed (mine number 7 remains open providing power for the local community). On this 3 hour excursion you will explore 'mine number 3' and will learn about coal production and life of the miners on Svalbard. It is dark, cool and quiet in the mine; if you listen carefully you can hear the mountain talking to you.

Your afternoon is at leisure in Longyearbyen. Why not visit the Svalbard Museum, the local handicraft centre and the art hall?

This evening we have included two experiences for you. The first is beer tasting at the Svalbard brewery, which at 78° north is the world's northernmost beer producer, made from 2000 year old glacial water. The second is an evening meal at Funken Lodge, an experience far-removed from

your wilderness meal on Day One. Overnight at Funken Lodge in Longyearbyen.

Day Three: Guided hike

Svalbard is alluring in part because of its sheer remoteness. Wherever you are your group and your guide are likely to be the only humans there. In Europe, this being alone is an all too rare experience. Today, alongside your local guide, you will hike to the summit of the Troll Stone Mountain (strenuous) from where a far-reaching view over Longyearbyen, the Isfjord and the mountains beyond unfolds. Take the opportunity to enjoy the silence and calm of this intoxicatingly beautiful scene.

For your final night in Longyearbyen we have reserved a table at Huset. This historic restaurant has received a 'Wine Glass' from Wine Spectator and offers fine dining of a Michelin star standard, without the price tag. Overnight at Funken Lodge in Longyearbyen.

Day Four: After breakfast, self transfer to Longyearbyen airport using the airport bus service for your return flight to the UK.

Summer in Svalbard and Tromsø

Itinerary: 8 days / 7 nights

As the snow melts around Longyearbyen, the incredible geological makeup of the Svalbard archipelago can be observed and the mountain peaks, valleys and open tundra become accessible with a local guide. Join a boat excursion on the Isfjord to witness the drifting sea ice, glacial cliffs and to explore the tidal shores rich in fossils. It is also possible to visit the abandoned mining settlement of Pyramiden and the Russian settlement of Barentsburg.

Combining the high Arctic with the university city of Tromsø, this seven night itinerary allows you to explore and experience two of the highlights of northern Norway. Cultural interactions, majestic scenery, delicious local cuisine and memorable experiences are guaranteed.

Day One: On arrival at Longyearbyen airport, self transfer to Funken Lodge in the centre of the town. Overnight at Funken Lodge in Longyearbyen (see page 84).

Day Two: Guided tour of Longyearbyen
The archipelago of Svalbard is like nowhere else on earth, and it is only with a guided tour that you will truly understand the islands - their geology,

history and modern-day life. This morning, we have included a 3-hour minibus excursion of the capital which will provide a welcoming insight into the islands. Afternoon and evening at leisure. Overnight at Funken Lodge in Longyearbyen.

Day Three: Boat excursion to Pyramiden and Nordenskiöld Glacier

After breakfast, you will be met by a local guide and transferred to the waterfront in Longyearbyen for your full day boat excursion to Pyramiden, an abandoned Russian mining settlement. Your cruise will leisurely sail inland along the Isfjord and Billefjord. Wrap up warm, and take your seat on the deck to enjoy the passing scenery - bird cliffs, drifting sea ice and the vibrant blue glacier of Nordenskiöld. At Pyramiden you will have time to explore the ghost town, last inhabited in 1998. Overnight at Funken Lodge in Longyearbyen.

Day Four: Fossil hunting on foot

Today, enjoy a 3-hour hiking tour on the moraine of the Longyear Glacier. Away from the town, the nature is silent, untouched and covered by gravel, small lichen, miniature grass and arctic flowers. It is also possible to uncover fossils amongst the landscape, and if you find a plant fossil you can take it home as a souvenir. Overnight at Funken Lodge in Longyearbyen.

Day Five: After breakfast, self transfer to Longyearbyen airport for your flight to Tromsø. On arrival in the largest city in Northern Norway, you will be transferred to the Clarion Hotel The Edge. Overnight at the Clarion Hotel The Edge in Tromsø (see page 70).

Days Six and Seven: Days at leisure in Tromsø. Opportunity to explore this evocative city and its museums and attractions. We would highly recommend taking the cable car towards the summit of Mount Storsteinen (421m) which affords a panoramic view over the city and its surrounding archipelago. Alternatively, why not join one of the many excursions which depart from the city? From boat tours and fishing, kayaking and hiking trips to glacial tours, there is something for everyone. Evening at leisure in Tromsø. Overnight at the Clarion Hotel The Edge in Tromsø.

Day Eight: After breakfast, you will be transferred to Tromsø airport for your return flight to the UK.

Price includes

- Flights to Longyearbyen airport, returning from Tromsø Vaernes airport (via Oslo Gardermoen)
- Private transfers on arrival and on departure in Tromsø
- 4 nights at the Funken Lodge, Longyearbyen (Bed & Breakfast)
- 3 nights at the Clarion Hotel The Edge, Tromsø (Bed & Breakfast)
- All excursions detailed
- Single room supplement on request.

Departures

Daily between Jun – Sep

Duration

7 nights

Guide price based on 2-sharing from £1,854 per person

