



Aphrodite's Rock area – JMA Photography

The South Limassol

and the villages at the foothills of the Troodos Mountain Range

The second largest town in Cyprus and a large cosmopolitan resort, Limassol lies between two great kingdoms of antiquity – Curium to the west and Amathus to the east. Here, in 1291, were the headquarters of the Knights Templar and the Knights of St John of Jerusalem and here, in Limassol Castle, Richard the Lionheart married Berengaria of Navarre. The Roman theatre of Curium lies 11 miles away, nearer is the Crusader castle of Kolossi and the magnificent pine-clad mountains of Troodos are just half an hour's drive north.

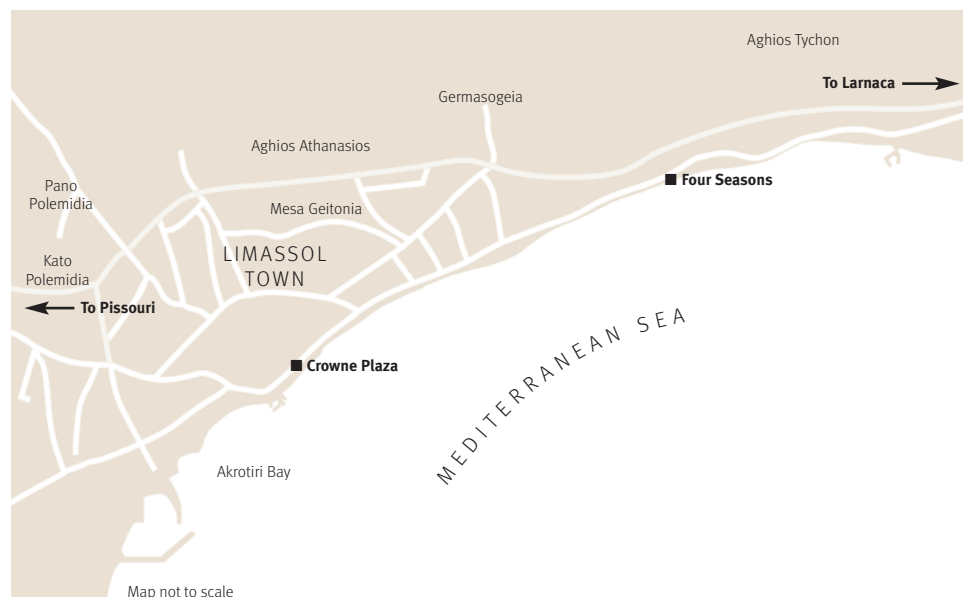
The large tourist area encompasses restaurants of all kinds, nightclubs, pubs and bars and watersports from the beaches. A few kilometres from Limassol is the Watermania Water Park with a 3,000 sq. m. wave pool, Kamikaze ride, waterslides and lazy river. The town has a great number of shops including those specialising in jewellery and leather goods. Annual events include a wine festival in September and a carnival in March. Limassol is also the port from which ships set off for trips to The Holy Land and Egypt.



Kolossi Castle – Photograph Doros Partasides



Curium



Anogyra

A medieval stone sculpture stands at the upper part of the long paved square which is surrounded by neat, traditional stone houses. This is a sprawling village and the centre of the 'Pasteli' sweet, cottage industry. The carob bean, at one time one of the major exports of the island, is the source of this traditional Cyprus sweet and the 'Pasteli' museum a fascinating visit. The village is a 30 minute drive from Paphos airport and forty minutes from Limassol. The nearest beach is a 15 minute drive, Avdimou, where there is a day time beach taverna. There are one or two friendly grocery shops in the village square, a local winery and the Oleastro olive park and taverna is a 10 minute walk away.



Nicolas & Maria's Cottages Anogyra

- Village House ■ Units sleep 2 to 4 ■ Self Catering
- Use of Swimming Pool
- Car Included, 30 mins drive from Paphos Airport

This small group of 300 year old buildings, built around a plant-filled courtyard, have been renovated and furnished in traditional style. The 8 studios (6 for 2 persons, 1 for 3 persons and 1 for 4 persons), are a short walk from the two tavernas each of which has a swimming pool that can be used free of charge by those occupying the cottages.

Accommodation

- All units have natural stone floors, beamed ceilings, double beds, some an extra sofa bed, television (not satellite), bathrooms with shower or bath tub and shower and kitchenette with fridge/freezer, toaster and electric/gas hobs. The two larger studios have fireplaces
- There is an ice machine in the courtyard
- Fan, Gas heating, Television
- Free Wi-Fi throughout.



Please note: Minimum stay is 2 nights.

■ Year round availability

Price indications

As we now offer a completely flexible flight programme to Cyprus, we no longer base our prices on a specific committed flight. The prices below are GBP per person and based on Aegean Airlines flight prices for Heathrow to Lamaca issued on 01/09/11 for departures on the first Saturday of every month. Prices are indications only and could be **lower** or **higher** on these or other days in the month, depending on prevailing accommodation rates and flight prices at the time of booking on any chosen departure day, holiday duration, preferred airline or departure airport.

Nicolas & Maria's Cottages includes car(s)

05Nov11 03Dec11 07Jan12 04Feb12 03Mar12 07Apr12 05May12 02Jun12 07Jul12 04Aug12 01Sep12 06Oct12
7n 14n 7n 14n 7n 14n 7n 14n 7n 14n 7n 14n 7n 14n 7n 14n 7n 14n 7n 14n 7n 14n 7n 14n

Studio

2p 614 779 614 779 614 779 614 779 669 888 669 888 669 888 669 909 699 942 699 942 699 942

Large Studio (Makrinari)

2p 655 861 655 861 655 861 655 861 655 861 726 1000 724 998 724 998 728 1026 757 1059 757 1059 757 1059

3p

610 770 610 770 610 770 610 770 610 770 659 867 658 866 658 866 660 884 682 908 682 908 682 908

Traditional Room (Palati)

2p 693 936 693 936 693 936 693 936 693 936 771 1089 769 1087 769 1087 772 1115 805 1155 805 1155 802 1148

3p

635 820 635 820 635 820 635 820 688 927 687 926 687 926 689 943 714 973 714 973 712 968

4p

607 765 607 765 607 765 607 765 607 765 648 845 647 844 647 844 648 858 668 881 668 881 667 878

Durations other than 7 or 14 nights can be arranged – please enquire.

Payment by credit or charge card will incur a 2.0% processing charge. This charge may rise if the credit card companies increase their charges.



Episkopi

A large village of 4,000 people with a good variety of tavernas, coffee shops and several supermarkets. Episkopi is only a 15 minute drive from Limassol, 40 minutes from Paphos and a short drive from the archaeological site of Curium and the Crusader Colossi castle. Curium beach is a five minute drive away. The village is ideally located for visiting Limassol, without being in the centre of this bustling, large resort and also affords easy access to the Troodos mountains. The Secret Valley and Aphrodite Hills Golf Courses are a 20 minute drive away.



Antony's Garden House Episkopi

- Village Inn ■ Rooms sleep 2 to 4 ■ Bed and Breakfast
- Car Included, 35 mins drive from Paphos Airport

Built in the mid 19th century and preserving its original character, this house is much appreciated by lovers of old Cyprus and those who want a peaceful base surrounded by flowers and trees. A short flight of steps leads up from the street through a high archway to an open reception and friendly bar. This is the old house comprising 3 large rooms with impressive and lofty arches – in bygone days used as stabling for camels. These are now the breakfast room (buffet breakfast), TV room/lounge with full size snooker table and split level family room with one double and two single beds, kitchenette with fridge and microwave and bathroom with bath.

The house looks onto a spacious courtyard full of mature shrubs and trees, notably two magnificent Cypress trees

with colourful bougainvillea climbing through them. At the end of the courtyard is a newer wing on two floors providing further bedrooms, discreetly built, which blend well with the original house. From the access verandah to the upper floor bedrooms a lovely view of Akrotiri and Episkopi Bay may be enjoyed.

More modern building: On the ground floor, two double and three twin bedded rooms with bath or shower. On the first floor, accessed by outside staircase, two twin rooms with shower. Fans on request.

Note: This property will be closed from 01/12/11 to 28/02/12.

■ Short Breaks can be booked to this property. See page 7



Price indications

As we now offer a completely flexible flight programme to Cyprus, we no longer base our prices on a specific committed flight. The prices below are GBP per person and based on Aegean Airlines flight prices for Heathrow to Larnaca issued on 01/09/11 for departures on the first Saturday of every month. Prices are indications only and could be **lower** or **higher** on these or other days in the month, depending on prevailing accommodation rates and flight prices at the time of booking on any chosen departure day, holiday duration, preferred airline or departure airport.

Antony's Garden House

bed and breakfast car included
Standard room

	Each of 2 sharing	
	7 nights	14 nights
05Nov11	650	863
03Mar12	650	863
07Apr12	688	935
05May12	685	931
02Jun12	685	931
07Jul12	691	966
04Aug12	722	999
01Sep12	722	999
06Oct12	722	999

Notes: Supplements for family room on request. Single supplements on request. Durations other than 7 or 14 nights can be arranged – please enquire. Payment by credit or charge card will incur a 2.0% processing charge. This charge may rise if the credit card companies increase their charges.





Arsos

One of the largest wine-producing villages on the island, Arsos is a 30 minute drive from Paphos airport and 60 minutes from Larnaca. Built on the slopes of Laona Mountain, the village is 1092 meters above sea level with views over the Diarizos river valley and the sea beyond. The village is known for the hospitality of its inhabitants and especially for the cooking prowess of the housewives who specialise in many traditional Cypriot sweets derived from grape juice such as Palouze and Shoudjiouko. There are two mini-markets, coffee shop, taverna, bakery and museum.

Cornaro House Arsos

- Village House ■ Sleeps 2 to 4 depending on unit ■ Self Catering*
- Air Conditioning* ■ Fans, Central heating, Television
- Car Included, 30 minutes drive from Paphos airport

The house was built in 1670 and has been tastefully converted. Furnished with antique pieces, this is an ideal base from which to explore the fascinating Diarizos river valley and foothills of the Troodos Mountains. It is a 200 metre walk into the village and the delightful village of Omodos is 8km away.

Accommodation

The two studios are on the ground floor and are with radio/cassette/CD, television, double bed (one studio has an extra sofa bed), bathroom with shower, kitchenette with gas hob/oven (one studio has only an electric hot plate) fridge/freezer, toaster and air conditioning.

One of the one bedroom units and the two bedroom unit are ground and first floor with the double bedded bedrooms upstairs (the two bedroom apartment has an additional small bedroom with bunk beds) with balcony or terrace. Downstairs is the living area with radio/cassette player, television and kitchenette with gas hob and electric/gaz oven and fridge/freezer



(one unit has washing machine). One unit has air conditioning both upstairs in the bedroom and downstairs in the living room. Both units can sleep up to 5 persons using an additional sofa bed.

The second one bedroom unit is on the ground floor and has a double bedded, air conditioned bedroom, kitchen/living area with gas hob (no oven), fridge/freezer, toaster, coffee maker, radio/cassette player and television and a bathroom with shower.

*Breakfast can be provided at the owner's small coffee shop opposite, if booked in the UK in advance.

Please note: the minimum stay 3 nights

■ Year round availability

Price indications

As we now offer a completely flexible flight programme to Cyprus, we no longer base our prices on a specific committed flight. The prices below are GBP per person and based on Aegean Airlines flight prices for Heathrow to Larnaca issued on 01/09/11 for departures on the first Saturday of every month. Prices are indications only and could be **lower** or **higher** on these or other days in the month, depending on prevailing accommodation rates and flight prices at the time of booking on any chosen departure day, holiday duration, preferred airline or departure airport.

Cornaro House includes car(s)

	05Nov11	03Dec11	07Jan12	04Feb12	03Mar12	07Apr12	05May12	02Jun12	07Jul12	04Aug12	01Sep12	06Oct12
Studio	7n	14n	7n	14n	7n	14n	7n	14n	7n	14n	7n	14n
2p	586	733	586	733	586	733	586	733	623	808	623	808
1 Bedroom Apartment	2p	630	822	630	822	630	822	668	897	668	897	668
3p	566	694	566	694	566	694	566	694	593	749	593	749
2 Bedroom Apartment	4p	567	695	567	695	567	695	567	695	588	736	588
5p	561	685	561	685	561	685	561	685	578	716	577	715

Durations other than 7 or 14 nights can be arranged – please enquire. Payment by credit or charge card will incur a 2.0% processing charge. This charge may rise if the credit card companies increase their charges.

Lofou

This village is a magical place, another world. The village traces its origins to the Byzantine period. The character of many of the buildings has been maintained and the streets are steep and narrow, some still paved with cobbles and stones. This was one of the richest villages in Cyprus with an abundance of underground water. Surrounding hillsides are terraced and planted with vines. Governor's Beach is about a 35 minute drive.



Lofou Agrovino Lofou

- Village Inn ■ Rooms Sleep 2 to 3 ■ Bed and Breakfast
- Air Conditioning included in price ■ Car included
- 50 minutes drive from Paphos airport & 55 mins drive from Larnaca airport

Costas Violonis is a farmer but, in 1992, decided that he wanted to renovate his traditional family home and transform it into the popular Lofou Agrovino which it is today. Decorated in traditional style and adorned with old artefacts, the tavern offers a wide variety of traditional dishes with the fruit and vegetables in season plucked direct from Costa's garden and orchards. Don't be surprised if, when the mood takes him, he takes up his bouzouki to sing songs both old and new. This is a true family business with Costa's wife, son and daughter very much involved in running this charming place. They also have a wine shop marketing their home made Pelentri wine as well as a coffee shop opposite the taverna. In addition to the taverna there is a cafeteria for snacks which has free Wi-Fi and cable TV for guests use.

Accommodation

Accommodation is in 7 studio apartments ■ All studios are tastefully renovated with many original features, smart furniture, stone floors and exposed stone walls ■ All have washing machine ■ fridge/freezer ■ toaster ■ gas hob, electric oven ■ air conditioning ■ television. Bathrooms are with shower and beds are double or twin ■ Most studios can take an extra single sofa bed ■ Tea and coffee are provided for guests' use.

Minimum stay at this delightful property is 2 nights.



Price indications

As we now offer a completely flexible flight programme to Cyprus, we no longer base our prices on a specific committed flight. The prices below are GBP per person and based on Aegean Airlines flight prices for Heathrow to Larnaca issued on 01/09/11 for departures on the first Saturday of every month. Prices are indications only and could be **lower** or **higher** on these or other days in the month, depending on prevailing accommodation rates and flight prices at the time of booking on any chosen departure day, holiday duration, preferred airline or departure airport.

Lofou Agrovino

bed and breakfast car included
Standard studio

	Each of 2 sharing	
	7 nights	14 nights
05Nov11	743	1048
03Dec11	743	1048
07Jan12	743	1048
04Feb12	743	1048
03Mar12	743	1048
07Apr12	783	1126
05May12	781	1124
02Jun12	781	1124
07Jul12	784	1151
04Aug12	814	1184
01Sep12	814	1184
06Oct12	814	1184

Notes: Supplements for single use of studio and larger studios on request. Durations other than 7 or 14 nights can be arranged – please enquire. Payment by credit or charge card will incur a 2.0% processing charge. This charge may rise if the credit card companies increase their charges.



Four Seasons Hotel Limassol

Owned and operated by Muskita Hotels Limited

- 5 Star Hotel ■ Bed and Breakfast ■ Swimming Pool ■ Air Conditioning
- 45 minutes private taxi transfer to and from Paphos or Larnaca Airports

On the edge of the Amathus area, just outside the cosmopolitan town of Limassol lies the prestigious Four Seasons Hotel. Independently owned and operated the luxury and sophistication, are the distinguishing marks of this 'Regal' establishment. Spoilt by fine surroundings and a warm atmosphere, you will be lured back again and again. Excellent service and facilities to the very highest of standards will ensure that The Four Seasons will leave you revitalised and relaxed. With 4 restaurants to choose from the hotel provides the ultimate in gourmet dining.

Amenities/Features

- Mavromatis Gourmet Greek Restaurant (no children under 5) with piano music and Vivaldi Italian Restaurant. Fine dining in both restaurants ■ Mavromatis & Vivaldi Al Fresco open from June to October ■ Seasons oriental (no children under 5) -authentic chinese specialities ■ Café Tropical (half board option only as buffet) ■ Colors Café-Patisserie ■ Vista Bar & Vista Terrace ■ Pool bars ■ Beach bar ■ Hairdressing salon ■ Spa Beauty shop ■ Boutiques ■ Newsagent ■



- Babysitting on request ■ Conference rooms ■ Laundry and valet service ■ 24 hour room service and reception ■ 24 hour in-house flower boutique.

Leisure/Activities

- 2 outdoor swimming pools with jacuzzis (main outdoor pool heated), 2nd outdoor pool for adults (18+ only) ■ Heated indoor pool with steam bath, sauna and Jacuzzi ■ Children's pool with water slide ■ Shiseido Spa with Thalassotherapy treatments and Health & Beauty Shop (payable locally) ■ Fully equipped gymnasium ■ Aerobics ■ Table tennis ■ Video amusement centre ■ 2 Floodlit tennis courts ■ Year round supervised kindergarten (3-8yrs) & Children's club (7-13yrs) July and school holidays ■ Watersports (summer only and payable locally) water skiing, jet skiing, pedaloes, wind surfing, canoes, parascending, speed boats, bananas, rings ■ Scuba diving courses with private tuition.

Entertainment

- Live entertainment ■ full in-house animation programme ■ various theme evenings (June to October).

Accommodation

304 double-bedded (king-size or twin bed) **superior rooms, studios and suites** (twin beds on request), 3 rooms for disabled persons. All rooms and suites elegantly furnished with private balcony with flower troughs. Bath, walk-in shower or double size jacuzzi with built in shower, wc, bathrobes, direct dial telephone with voice mail, radio, Digital TV, high speed Internet connection, Play Stations, Pay TV,



hairdryer, mini-safe, mini-bar, baby listening device, air conditioning. Coffee and tea making facilities, Interconnecting rooms and a variety of suites. Superior rooms can take a 3rd bed and have a double sized jacuzzi bathtub with built in rain shower. Studios have a separate bath and a walk in shower.

Please note: the minimum stay 5 nights.

Special Offers

No sea view supplement for completed stays between 01/12/11-23/12/11 and 08/01/12 – 31/03/12 in Superior Sea view rooms (minimum stay 7 nights).



Price indications

As we now offer a completely flexible flight programme to Cyprus, we no longer base our prices on a specific committed flight. The prices below are GBP per person and based on Aegean Airlines flight prices for Heathrow to Larnaca issued on 01/09/11 for departures on the first Saturday of every month. Prices are indications only and could be **lower** or **higher** on these or other days in the month, depending on prevailing accommodation rates and flight prices at the time of booking on any chosen departure day, holiday duration, preferred airline or departure airport.

Four Seasons Hotel

	bed and breakfast private transfers included	
	Superior inland room	
	7 nights	14 nights
05Nov11	953	1406
03Dec11	878	1255
07Jan12	901	1278
04Feb12	878	1255
03Mar12	878	1255
07Apr12	1053	1602
05May12	1234	1968
02Jun12	1234	1968
07Jul12	1241	1982
04Aug12	1439	2372
01Sep12	1254	2002
06Oct12	1247	1988

Notes: Supplements for superior room types listed in hotel description above on request. Discounts for children sharing parents' accommodation. Extra meal and single room supplements and third adult sharing discount on request. Durations other than 7 or 14 nights can be arranged – please enquire. Payment by credit or charge card will incur a 2.0% processing charge. This charge may rise if the credit card companies increase their charges.



Crowne Plaza Limassol

Formerly the Holiday Inn -- Limassol

- 4 Star beach Hotel ■ Renovated 2011 ■ Half Board
- Swimming Pools – Indoor and Outdoor ■ Air Conditioning
- 45 minutes private taxi transfer to and from Paphos or Larnaca Airports included

Located right on the sea, this well established property is the closest beach hotel to the city centre and old town.

Amenities/features

- Churchill Haven Restaurant and terrace for a la- carte and buffet dining ■ Cypriot/Greek /Italian theme nights ■ Lounge Terrace overlooking pool for coffee/drinks with evening cocktail and ice cream menus ■ Ascot Lounge Bar ■ Pool Parlour Bar and Pool Parlour Pergola for all day casual dining ■ Summer only Beach Bar for refreshments and ice-cream ■ 24 hour room service ■ Free car parking in hotel grounds ■ Conference facilities ■ Fruit on arrival.

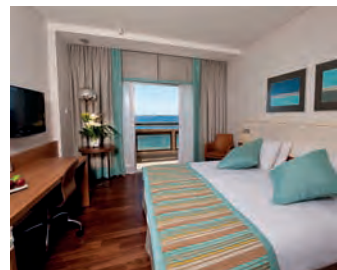
Leisure/activities

- Outdoor swimming pool with water jets ■ Heated (winter only) indoor pool ■ Health and Leisure club with 24 hour gym and sauna, steam bath and Jacuzzi free to hotel guests 16.00-20.00 daily ■ Floodlit tennis court ■ Children's playground ■ Variety of water sports (summer only) payable locally approx. 600 metres from hotel.



Accommodation

144 **superior rooms and suites**, all completely renovated in 2011. Superior rooms are **sea view or inland view** with double or twin beds. All have electronic security lock, telephone with PL port, wireless, fast internet access, voice mail, mini-bar, tea/coffee making facilities, satellite TV, hairdryer, bathroom, balcony. Overall size 25 m. **Suites** are individually furnished and are from 50-65 m².



Price indications

As we now offer a completely flexible flight programme to Cyprus, we no longer base our prices on a specific committed flight. The prices below are GBP per person and based on Aegean Airlines flight prices for Heathrow to Larnaca issued on 01/09/11 for departures on the first Saturday of every month. Prices are indications only and could be **lower** or **higher** on these or other days in the month, depending on prevailing accommodation rates and flight prices at the time of booking on any chosen departure day, holiday duration, preferred airline or departure airport.

Crowne Plaza

bed and breakfast (1/04/10-31/10/10 half board - evening only) private transfers included Superior Sea View

	Each of 2 sharing	
	7 nights	14 nights
05Nov11	953	1406
03Dec11	912	1323
07Jan12	912	1323
04Feb12	912	1323
03Mar12	953	1406
07Apr12	1070	1639
05May12	1111	1721
02Jun12	1159	1817
07Jul12	1166	1885
04Aug12	1254	2002
01Sep12	1254	2002
06Oct12	1172	1837

Notes: Supplements for superior room types listed in hotel description above on request. Discounts for children sharing parents' accommodation. Extra meal and single room supplements and third adult sharing discount on request. Christmas/New Year meal supplements included. Durations other than 7 or 14 nights can be arranged – please enquire. Payment by credit or charge card will incur a 2.0% processing charge. This charge may rise if the credit card companies increase their charges.



■ Short Breaks can be booked to this property. See page 7