

Meganissi

Paradoxically, Meganissi means "large island" in Greek. It is the largest of six little islands to the east of Lefkas but measures just twenty square kilometres with a population of around 1,200.

Regular ferries travel from Lefkas Town and Nidri on Lefkas, past Onassis' island of Skorpios and on to the sheltered port of Vathy, where fishing boats and visiting yachts moor alongside the waterfront houses and tavernas. Just inland lie the two sleepy villages of Katomeri and Spartochori, where narrow streets of cobblestone pass whitewashed houses, a few shops and a selection of tavernas.



A north coast beach



Agios Ioannis beach

Spartochori enjoys dramatic views across the sea to the mountains of the Greek mainland and has two minimarkets.

Katomeri, one kilometre from Vathy port, is the peaceful capital of the island and has a series of narrow streets with courtyards of flowers, traditional tavernas and a bakery.

A coastal road winds through a beautiful landscape of olive groves and pine trees, where the remains of ancient windmills and threshing floors can be found, and leads to secluded bays and beaches.



A Meganissi sea cave

Boat hire is recommended to explore the island's coastline and to get closer to Lefkas' offshore islands including Skorpios.

Life on Meganissi is slow and simple. The lifestyle of friendly farming communities and peaceful, natural surroundings will appeal to those wanting a rarely found escape from built up resorts.



Spilia beach



Vathy



Vathy



Villa Aleka



Near Spartochori | Sleeps 2 – 6

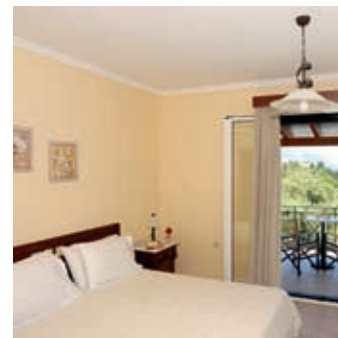
■ *Early Booking Offer*

Villa Aleka is just a five minute walk from the small and sleepy hilltop village of Spartochori, with its narrow streets of cobblestone and whitewashed houses bordered by flowers.

The Villa stands privately on a hillside terrace of olive groves with beautiful views to the rooftops of Spartochori village and across Spilia Bay to the open sea and the Greek mainland. This is a modern, spacious villa with sea-facing balconies and terraces surrounded by colourful gardens.

A ten minute walk from the village takes one down to the little port of Spilia. Spilia's waterfront has two tavernas and leads to a sheltered beach backed by olive groves.

As the port of Spilia is so close, we would thoroughly recommend the hire of a boat with an outboard engine to explore the many beaches which can only be reached by sea.



Accommodation: ground floor of an open-plan sitting room, dining and kitchen area (with dishwasher & microwave); two twin bedrooms, each with en suite bathroom with shower. First floor of one double bedroom, en suite bathroom with bath and shower. All bedrooms with balcony/terrace.

Facilities: air-conditioning in all bedrooms; TV/DVD & CD player; washing machine; mosquito screens to windows; barbecue.

Private swimming pool: 10m x 5m & depth 0.80m – 1.6m with Jacuzzi section.

Amenities: Spartochori village has three small minimarkets and five restaurants (three traditional and two pizzeria). A hired boat can be moored at Spilia port.



Villa Eleni

Near Spartohori | Sleeps 2 – 6

■ *Early Booking Offer*



Five minute's walk from the delightful, small village of Spartohori stands Villa Eleni nestled privately on its hillside terrace. There are excellent views from the terrace over the charming streets and houses of Spartohori, across the bay and to the Greek mainland.

The little port of Spilia, with three tavernas, is only a ten minute walk as is a sheltered beach behind the olive groves.

Many other beaches can only be reached by sea so we recommend guests hire a small boat with outboard motor in order to explore.

Eleni is a sister villa to Villa Aleka and in a similar position, though each villa is private and does not encroach on the other.



Accommodation: ground floor of an open-plan sitting room, dining and kitchen area (with dishwasher & microwave); two twin bedrooms, each with en suite bathroom with shower. First floor of one double bedroom, en suite bathroom with bath and shower. All bedrooms with balcony or terrace.

Facilities: air-conditioning in all bedrooms; TV/DVD & CD player; washing machine; mosquito screens to windows; barbecue.

Private swimming pool: 10m x 5m & depth 0.80m – 1.6m with Jacuzzi section.

Amenities: Spartohori village has three small minimarkets and five restaurants (three traditional and two pizzeria). A hired boat can be moored at Spilia port.



Villa Eden

Near Port Vathy | Sleeps 2 – 6

■ *Early Booking Offer*



Villa Eden is just a ten minute walk from the small port of Vathy, one of the island's two ports on the north coast. It has been designed to exacting standards and offers privacy and dramatic sea views.

Set in a beautiful landscape, bordered by olive and pine trees, the villa has a secluded hillside position overlooking the island of Lefkas and across the sea to the mountains on the Greek mainland. It is a ten minute walk from the nearest beach.

Modern and comfortably furnished interiors open out on to a selection of private terraces and a beautiful courtyard with a palm tree and a barbecue/dining area.

As Vathy Port is a ten minute walk, we thoroughly recommend the hire of a small boat with outboard engine to discover the many beaches that can only be reached by sea.



Accommodation: open-plan sitting room and kitchen (with dishwasher) leading to covered dining terrace; one double bedroom, en suite bathroom with bath and shower; one twin bedroom, en suite shower room. A separate annexe, just a few metres away from the main house, has one double bedroom, en suite shower room and kitchenette.

Facilities: air-conditioning and ceiling fans throughout; satellite TV/DVD & CD player; washing machine; mosquito screens to all windows; safe; ipod docking station; barbecue.

Private swimming pool: 12m x 4m & depth 1m – 1.8m

Amenities: Vathy has waterfront tavernas, a grocery shop and a bakery. The nearby port of Spilia has two tavernas.



Shamballa

At Abelaki Bay | Sleeps 2 – 4

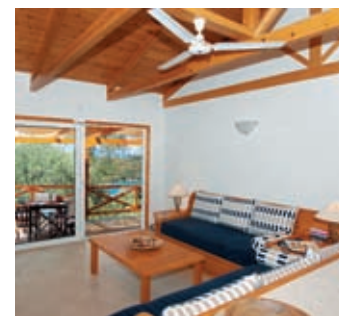
■ *Early Booking Offer*



Shamballa is just a fifteen minute walk from the small port of Vathy, one of the island's two ports on the north coast.

Bordered by olive and pine trees, the villa has a secluded hillside position overlooking a sheltered bay and across the sea to the mountains on the Greek mainland and is a five minute walk from the nearest beach. Abelaki Bay has two good tavernas just above the water.

This modern property has been furnished with taste and the light interiors open out to a series of private terraces to capture sun and shade. The best views of the bay below are from the plunge pool/Jacuzzi. Boat hire is recommended.



Accommodation: open-plan sitting room and kitchen opening to covered dining terrace; one double bedroom and one twin bedroom leading to terraces, each with en suite shower room.

Facilities: air-conditioning in both bedrooms and ceiling fan in sitting room; TV/DVD & CD player; internet connection; washing machine; mosquito screens to all windows; safe; barbecue.

Private swimming pool: plunge pool/Jacuzzi

Amenities: Vathy has waterfront tavernas, a grocery shop and a bakery. The nearby port of Spilia has more waterfront tavernas. A hired boat can be moored in Vathy or Ambelaki.



The Limonari Villas



At Limonari | 2 villas each sleeping 2 – 3 & 1 villa sleeping 2 – 5

■ *Early Booking Offer*

A narrow road of one kilometre winds its way down a hillside of olive groves from the sleepy island capital of Katomeri to the beautifully clear sea at Limonari on Meganissi's south-east coast. Just a few metres away from the sea and two small beaches, the Limonari Villas look out to the island of Kalamos, the mountains of the Greek mainland and along Meganissi's east coast.

Set on separate levels of the hillside, each of the three villas has a large sea-facing pool terrace with stunning, uninterrupted views. The pool areas do not overlook another. These are some of our best selling properties.

A small, secluded beach is a one minute walk away and a larger beach is a three minute walk away. Katomeri, a drive of five minutes, has a bakery and taverna. Vathy is a drive of ten minutes and has three supermarkets, four waterside tavernas, a pizzeria and ouzeri.



Accommodation: Villa 1 (top hillside terrace) has one twin bedroom and two bathrooms; Villa 2 (middle hillside terrace) has one double and one twin bedroom and two en suite bathrooms; Villa 3 (lower hillside terrace) has one double bedroom and two bathrooms. Each villa has an open-plan sitting room (with sofa bed), dining area and kitchen (with dishwasher and microwave).

Facilities: each villa has air conditioning throughout; flat screen TV/DVD & CD player; washing machine; safe; mosquito screens to all windows; barbecue.

Private swimming pool: each villa's pool is 8m x 4m & depth 0.85m – 1.7m



One of the Limonari Villas

For more detailed information & photos visit www.gicthevillacollection.com