



Tuscany



# Tuscany

The Tuscan landscape is dotted with lines of cypress trees, vineyard-covered hills and walled towns forming the backdrop for its classic Renaissance art which flourished in the 15th and 16th centuries.



The painter and sculptor Michelangelo Buonarroti, along with Leonardo Da Vinci, were two of the most prodigious talents to influence the artists that followed through the centuries. Many of their works can be viewed in **Florence**, one of the greatest artistic treasure-houses of the world. Where else but in Florence can so much perfection be enjoyed in such a small area? Think of Giotto, Donatello, Botticelli and Della Robbia. These and many more claim your attention at every turn. But Florence is not only history and culture; shopping here is a delight (especially amidst the tiny jewellery shops on the Ponte Vecchio) and the Tuscan cuisine is simply delicious.

A 5km winding road, through terraces of olives and vineyards, takes you to the Etruscan hilltop town of **Cortona**, one of the oldest and most scenic towns in Tuscany. A stunning panorama includes fabulous views towards **Lake Trasimeno** beyond the Valdichiana (a rich cattle-grazing area famous for producing the Florentine 'Bistecca') and to the distant mountains of Amiata and Cetona.

Another Etruscan hill town occupying a commanding position above the Val d'Elsa is **San Gimignano**, the town of beautiful towers. The medieval charm and character remain in the square towers, narrow cobbled lanes and corners within the town's fortified walls.

Close to the Mediterranean coast, 29km from San Gimignano, is the medieval hilltop city of **Volterra**, within easy driving distance of Florence, Siena and the sea. The walled town is an enchanting labyrinth of cobbled streets with parks and a wide choice of restaurants and bars. Once Etruscan and later Roman, this small town is now one of the best known centres for the turning and polishing of alabaster. Volterra is much quieter than the very popular San Gimignano and an ideal centre for touring Tuscany.

To the north of Pisa stands the small walled city of **Lucca**, largely ignored by foreign visitors to Tuscany possibly because it has no famous museum or palace. It is still very much a real Italian town. Strolling through the narrow paved alleys, window-shopping at either the elegant boutiques selling Italian fashion or the salumeria where 'food' is a work of art, the visitor experiences Italian life and style at first hand.

Home to the Palio which takes place twice in the summer (2nd July and 16th August) is **Siena**. This colourful event is a horse race around the cobbled main square (the Campo) with competitors from all the districts of the town (Contrade) re-enacting a medieval tradition. Siena is impossibly crowded on these two days but is so beautiful and full of colour at any time that a stroll through the narrow streets, lined with palaces, is always a spectacle.



## Hotel Paris, Florence

- Airports: 6km Florence/105km Pisa or Bologna
- 3-star superior hotel ■ Bed & Breakfast ■ Air-conditioning

**H**otel Paris, centrally located in the historic heart of Florence, is housed in a fabulous 16th century Renaissance mansion. Beautiful frescoes adorn the breakfast room ceiling and many of the guestrooms have high ceilings due to the structure of the original building. The major attractions including the Duomo and Ponte Vecchio are within easy walking distance, as is the Santa Maria Novella train station. This hotel is one of the few remaining, Florentine residences that offer accommodation in period style rooms furnished with antiques. Recommended!

**Accommodation:** 67 air-conditioned rooms including standard rooms, triple rooms, family rooms for up to 4 people and suites ■ All rooms have bathroom (bath and/or shower), hairdryer, satellite TV, safe deposit box, telephone and minibar ■ WIFI internet connection in some rooms (on request and payable locally).

**Amenities/Leisure:** Buffet breakfast ■ Lift ■ WIFI internet connection available at reception.

**Minimum stay:** 2 nights between 23-24Apr11

### Guideline price £ per person - 3 nights

Prices based on 2-sharing a Standard room and flights to Pisa with British Airways. Single room supplement on request. Private transfers can be arranged at a supplement. Alternative flights to Florence with Meridiana available on request.

Hotel Paris	Jan-Apr	May-Jun	Jul-Aug	Sept-Dec
	£400	£411	£347	£411

**Special Offers:** Couples celebrating their honeymoon or anniversary receive a complimentary bottle of Spumante in their room on arrival ■ Stay 4 nights pay 3 nights between 02-09Jan11, 14-19Jan11, 22Jan-31Mar11 and 10Jul-05Sep11.

Please refer to page 9 for details of pricing structure or telephone us for a quotation.



## Hotel degli Orafi, Florence

- Airports: 6km Florence/105km Pisa or Bologna
- 4-star hotel ■ Bed & Breakfast ■ Air-conditioning

**H**otel degli Orafi is famous for providing 'The View' in the Merchant-Ivory adaptation of E.M. Foster's classic 'A Room with a View.' The hotel, recently restored, retains many of its original architectural features such as the partially restored remains of an ancient tower. Fabulous frescoes dating from the 19th century can be seen in the breakfast room and a bar with panoramic terrace overlooks the River Arno and Ponte Vecchio.

**Accommodation:** 42 air-conditioned rooms including single rooms, standard rooms, executive rooms and deluxe junior suites ■ All rooms have bathroom (bath or shower), hairdryer, satellite TV, minibar, telephone and safe deposit box ■ Some executive rooms and one deluxe junior suite enjoy views over the River Arno and Ponte Vecchio ■ The executive rooms will accommodate an extra bed for an adult or child ■ Bar with panoramic terrace overlooking the River and Cathedral.

**Amenities/Leisure:** Buffet breakfast ■ Library ■ WIFI internet access (payable locally) ■ Lift.

**Minimum stay:** 3 nights between 22-24Apr11 and during festival exhibition dates

### Guideline price £ per person - 3 nights

Prices based on 2-sharing a Standard room and flights to Pisa with British Airways. Single room supplement on request. Private transfers can be arranged at a supplement. Alternative flights to Florence with Meridiana available on request.

Hotel degli Orafi	Jan-Apr	May-Jun	Jul-Aug	Sept-Dec
	£495	£539	£456	£539

**Special Offers:** Couples celebrating their honeymoon receive a complimentary bottle of sparkling wine in their room on arrival ■ Stay 4 nights pay 3 nights between 02Jan-31Mar11 and 03Jul-04Sep11.

Please refer to page 9 for details of pricing structure or telephone us for a quotation.



Florence



## Hotel Croce di Malta, Florence

- Airports: 6km Florence/105km Pisa or Bologna
- 4-star hotel
- Bed & Breakfast
- Outdoor swimming pool
- Air-conditioning



The Hotel Croce di Malta, formerly a convent, has been completely remodelled and converted into a good four-star hotel with outdoor swimming pool - an unusual if luxuriant feature for such a centrally located Florentine residence. This modern hotel provides the perfect location, being just a few metres from Piazza Santa Maria Novella and easy walking distance to the major sights of Florence.

**Accommodation:** 98 air-conditioned rooms including single rooms, standard rooms and suites ■ All rooms have bathroom (bath or shower), hairdryer, telephone, satellite and pay TV, safe deposit box, internet connection and minibar ■ Some rooms have a balcony ■ The suites are split level with a living area (with sofa bed) on the ground floor and bedroom on the mezzanine floor. Some suites have two bedrooms and will comfortably accommodate five persons (4 adults and 1 child).

**Amenities/Leisure:** Continental buffet breakfast ■ Fine restaurant serving typical Tuscan cuisine ■ Cocktail lounge ■ Piano bar (4 times a week) ■ Sun terrace by the pool ■ Panoramic roof terrace ■ Swimming pool (9 x 7m) open Jun-Sep ■ Lift ■ Private garage (payable locally).

### Guideline price £ per person - 3 nights

Prices based on 2-sharing a Standard room and flights to Pisa with British Airways. Single room supplement on request. Private transfers can be arranged at a supplement. Alternative flights to Florence with Meridiana available on request.

Hotel Croce di Malta	Jan-Apr	May-Jun	Jul-Aug	Sept-Dec
	£365	£443	£370	£443

**Special Offers:** Couples celebrating their honeymoon or anniversary receive a complimentary bottle of Spumante in their room on arrival ■ Stay 7 nights pay 6 nights all year.

Please refer to page 9 for details of pricing structure or telephone us for a quotation.



## Hotel Villa Marsili, Cortona

- Airports: 60km Perugia/115km Florence/223km Pisa
- 4-star hotel
- Bed & Breakfast
- Air-conditioning



Villa Marsili, a charming historic residence dating back to the 14th century, is located within a 4-minute walk from the historic centre of Cortona. This elegant and stylishly decorated property has been restored to its original architectural splendour. The main hall and bedrooms are all individually frescoed and illuminated by Murano glass fittings as well as beautifully furnished with antiques. Recommended!

**Accommodation:** 26 air-conditioned rooms including single rooms, classic rooms, deluxe rooms and open-plan suites ■ All rooms have bathroom (bath or shower), hairdryer, satellite TV, telephone, internet connection, minibar, safe deposit box and views over the valley or towards the town of Cortona ■ The spacious deluxe rooms have a Jacuzzi and views of the Valdichiana ■ The open-plan suites have an archway separating the designated living area and the bedroom, a bathroom (Jacuzzi and separate shower) and wonderful views of the Valdichiana ■ All rooms will accommodate an extra bed for an adult or child.

**Amenities/Leisure:** Buffet breakfast ■ Lounge with fireplace ■ Bar ■ Small pergola garden ■ 4-minute walk uphill to the town centre ■ Parking close-by (c. 12 Euros per day) ■ Public swimming pool (2.5km) payable locally ■ Tennis courts (1km) payable locally.

### Guideline price £ per person - 7 nights

Prices based on 2-sharing a Classic room, flights to Pisa with British Airways and car hire (Group A - see page 108). Single room supplement on request. Alternative flights to Florence with Meridiana available on request.

Hotel Villa Marsili	Jan-Apr	May-Jun	Jul-Aug	Sept-Dec
	£869	£874	£899	£874

Please refer to page 9 for details of pricing structure or telephone us for a quotation.



## Albergo San Martino, Lucca

- Airports: 34km Pisa/68km Florence ■ 3-star hotel
- Bed & Breakfast ■ Air-conditioning

A small intimate hotel located on a quiet narrow street within the city walls in the heart of Lucca's historic centre. The interiors of the rooms, lounge and hallways are stylishly decorated in warm, inviting colours, which complement the kind hospitality extended to guests staying at this property. This clean, functional hotel, ideal for short city breaks, offers comfortable lodgings from which to explore the delights of the city.

**Accommodation:** 10 air-conditioned rooms including 2 suites, all with bathroom (shower), telephone, TV and minibar ■ The suites have 1 double bedroom and 1 single bedroom.

**Amenities/Leisure:** Continental breakfast which may be taken outside during the summer months ■ Bar and small lounge ■ Parking close-by ■ Free use of bicycles.

### Guideline price £ per person - 3 nights

Prices based on 2-sharing a Standard room, flights to Pisa with British Airways and car hire (Group A – see page 108). Single room supplement on request.

Albergo San Martino	Jan-Apr	May-Jun	Jul-Aug	Sept-Dec
	£425	£426	£437	£426

Please refer to page 9 for details of pricing structure or telephone us for a quotation.



## Hotel Ilaria & Residenza dell'Alba, Lucca

- Airports: 34km Pisa/68km Florence ■ 4-star hotel
- Bed & Breakfast ■ Air-conditioning

Located in the historic centre of Lucca and within the ancient city walls, the Ilaria is a modern, comfortable hotel. The property, formerly the stables of Villa Bottini, is ideally positioned near the medieval gate of San Gervasio, within a few minutes walk of the shops and restaurants of this charming walled city and, more importantly, easily accessible by car.

**Accommodation:** 41 air-conditioned rooms including classic rooms, triple rooms, superior rooms and suites, all with bathroom (bath or shower), hairdryer, telephone, satellite TV, safe deposit box and minibar ■ Front rooms overlook a small canal ■ Rear rooms overlook a delightful, tree filled garden ■ The suites are located in an annexe (opposite the main building) and comprise of 2 floors. The first floor has a bedroom and a bathroom (shower). The ground floor has a living room with single sofa bed for a child and bathroom (Jacuzzi bath).

**Amenities/Leisure:** Buffet breakfast ■ Two large sun terraces facing the park where breakfast can be taken in the summer months ■ One of the terraces has a Jacuzzi ■ Lift ■ Free use of bicycles ■ Complimentary 24-hour buffet bar with tea, coffee and snacks (self service) ■ Free parking ■ Internet access at reception (free of charge).

### Guideline price £ per person - 3 nights

Prices based on 2-sharing a Classic room, flights to Pisa with British Airways and car hire (Group A – see page 108). Single room supplement on request.

Hotel Ilaria and Residenza dell'Alba	Jan-Apr	May-Jun	Jul-Aug	Sept-Dec
	£520	£522	£535	£522

Please refer to page 9 for details of pricing structure or telephone us for a quotation.



Tuscany



Florence



Room in Casabella



Restaurant

## Fattoria Lavacchio, Pontassieve

- Airports: 18km Florence/129km Bologna/132km Pisa
- Agriturismo
- Bed & Breakfast (BB)
- Self Catering (SC)
- Outdoor swimming pool
- Air-conditioning



Fields of vineyards and olive groves in the Florentine hills of Montefiesole surround the Fattoria Lavacchio. The estate covers 110 hectares, twenty-one of which are vineyards that cultivate a variety of grapes and produce some excellent wines, namely Fonteggali, Cedro (riserva) Chianti Rufina and Oro del Cedro. Tours of the wine cellar and olive oil factory, horse riding, mountain biking and pottery classes (where the techniques of classical Tuscan ceramics are revealed) are some of the many activities offered here. There is an outdoor swimming pool and a gastronomic restaurant offering typical Tuscan cuisine using local produce and regional wines. Guests are housed in two neighbouring farmhouses: Casabella and Monterifrassine.

**Casabella (BB)** has 8 rustic styled air-conditioned rooms including standard rooms, one junior suite, senior suites and one deluxe suite ■ All rooms have bathroom (bath and/or shower), minibar, TV, telephone, complimentary WIFI internet connection, terracotta flooring and dark, solid furniture ■ Views are of either the olive groves, vineyards, Rufina town, Lake Vetrina or the swimming pool ■ Some rooms interconnect ■ Some rooms will accommodate an extra bed for an adult or child ■ Twin beds can be put together (on request) to make a double bed ■ There is also a common breakfast-room, TV lounge and reception area.

**Minimum stay (Casabella):** 3 nights

**Monterifrassine (SC)** has 5 large air-conditioned apartments ■ Welcome pack included (see page 110) ■ Linen changed weekly ■ Final cleaning included ■ c.2-minute walk to the restaurant ■ On the ground floor of the house is a common laundry room and garden with seating and a barbecue area.

**Trebbiano – Ground floor (sleeps 2+2):** 1 double room, bathroom (shower) and living room with fireplace, twin sofa beds, TV and kitchenette (oven, hobs and fridge). Suitable for disabled guests.

**Canaiolo – First floor (sleeps 2+2):** 1 double/twin room, bathroom (shower) and living room with fireplace, twin sofa beds, TV and kitchenette (oven, hobs and fridge). This apartment interconnects with Ciliegiole and Malvasia.

**Ciliegiole – First and Second floor (sleeps 2+2):** 1 double room on the upper floor and on the 1st floor a bathroom (shower) and living room with fireplace, twin sofa beds, TV and kitchenette (oven, hobs and fridge). This apartment interconnects with Canaiolo and Malvasia.

**San GIOVINE – First floor (sleeps 4+2):** 1 double room and 1 twin room, bathroom (shower), living room with fireplace, twin sofa beds, TV and kitchenette (oven, hobs and fridge).

**Malvasia – 3 floors with private entrance (sleeps 4+4):** 1 large double/twin room with double sofa bed and 2 bathrooms (shower) on the 1st floor, 1 large double/twin room with double sofa bed on the 2nd floor and living room with kitchenette (oven, hobs, fridge and dishwasher) on the ground floor. This apartment interconnects with Ciliegiole and Canaiolo.

**Minimum stay (Monterifrassine):** 7 nights

**Arrivals (Monterifrassine):** Saturdays

**Open:** 05Mar11

**Amenities:** Restaurant 'Mulino a Vento' serving regional cuisine

- Outdoor swimming pool (8 x 16m) open May-Sep ■ Pool bar
- Closest supermarket in Pontassieve (7km) open Mon-Sat
- Nearest train stations at Sieci or Pontassieve (7km) ■ Trains depart every 40-minutes to Florence (20-minutes' journey).

### Guideline price £ per person - 7 nights

Prices based on 2-sharing a Standard room or a 1-Bedroom apartment, flights to Pisa with British Airways and car hire (Group A – see page 108). Single room supplement on request.

Fattoria Lavacchio	Jan-Apr	May-Jun	Jul-Aug	Sept-Dec
Standard room	£713	£717	£883	£717
1-Bedroom apartment (Trebbiano)	£643	£646	£779	£646

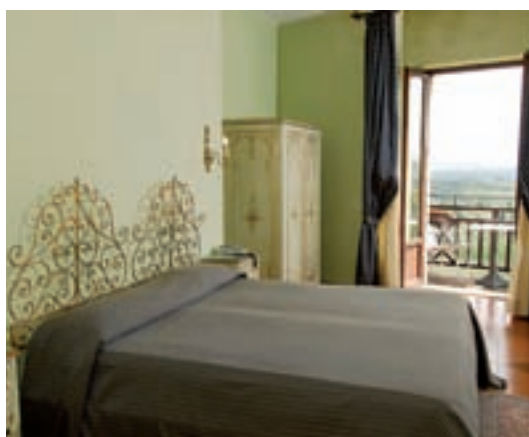
Please refer to page 9 for details of pricing structure or telephone us for a quotation.



San Gimignano, Tuscany



Siena



## Hotel La Cisterna, San Gimignano

- Airports: 75km Pisa/70km Florence
- 3-star hotel ■ Bed & Breakfast ■ Air-conditioning

In the centre of San Gimignano is the ancient Cistern Square where Hotel La Cisterna stands, one facade overlooking the square and the other towards Val d'Elsa, some of the loviest scenery in vTuscany. This 14th century building has been furnished in a style perfectly in keeping with the charm of its surroundings. A unique hotel and a town not to be missed.

**Accommodation:** 48 air-conditioned rooms including single rooms, standard rooms, superior rooms and junior suites ■ All rooms have bathroom (bath or shower), hairdryer, telephone, satellite TV and fridge ■ Some standard rooms have a view of the square or valley ■ Deluxe rooms have a balcony and a view of the square or valley ■ Superior rooms have a view of the square or valley ■ The junior suites have two connecting rooms accommodating 3 adults and a view of the square or valley.

**Amenities/Leisure:** Buffet breakfast ■ 'Le Terrazze' panoramic restaurant (reservations advisable) ■ Internet connection at reception ■ Parking outside the city walls (c.300m) payable locally.

**Open:** 19Mar11

### Guideline price £ per person - 7 nights

Prices based on 2-sharing a Standard room, flights to Pisa with British Airways and car hire (Group A – see page 108). Single room supplement on request.

Hotel La Cisterna	Jan-Apr	May-Jun	Jul-Aug	Sept-Dec
	£609	£668	£630	£668

Please refer to page 9 for details of pricing structure or telephone us for a quotation.



## Hotel Villa San Paolo, San Gimignano

- Airports: 68km Pisa/63km Florence ■ 4-star hotel ■ Bed & Breakfast
- Outdoor swimming pool ■ Indoor relaxation pool ■ Air-conditioning

The Villa San Paolo, is set within a large park of cypress trees and olive groves with spectacular views over the Tuscan countryside and walled town of San Gimignano (4.5km). The property has been beautifully restored in keeping with the original features of this 20th century aristocratic Villa. The elegantly furnished rooms have been tastefully designed combining the old and the new to create a comfortable and relaxed atmosphere. Open-air dining on the panoramic terrace provides the perfect location to unwind and enjoy delicious Tuscan cuisine accompanied by a fine bottle of Italian wine from the hotel's impressive wine cellar. This property is a perfect choice for a fly-drive holiday, within easy driving distance of many fascinating towns in the region.

**Accommodation:** 78 air-conditioned rooms split between two buildings, the original villa and a new wing 'the Borgo' ■ The Villa has 22 rooms and the Borgo has 56 rooms including class (no particular view), prestige (spacious room or Jacuzzi or panoramic view) and suites located in the Borgo ■ All the rooms have a bathroom (bath or shower), hairdryer, telephone, satellite TV, internet connection, safe deposit box and minibar ■ Most rooms have private balcony or patio ■ Some rooms interconnect ■ Some rooms have a view towards San Gimignano ■ Some rooms will accommodate an extra bed for a child ■ Rooms with queen-size bed available on request.



**Amenities/Leisure:** Buffet breakfast ■ 'Lampolla' panoramic restaurant serving Italian cuisine (Taster menu costs c. 40 Euros per person) and offering a selection of 600 Italian wines – reservations for dinner recommended ■ Three lifts (2 in Borgo and 1 in the Villa) ■ 'L'Oliva Vinoè' lounge bar serving snacks ■ Gift shop ■ Tennis court and gym (free of charge) ■ Swimming pool (15 x 6m) open May-Sep ■ Poolside bar serving snacks (May-Sep) ■ Well-maintained gardens with views of the towers of San Gimignano ■ 'Irispa' wellness centre: Jacuzzi, sauna, heated indoor relaxation pool, steam bath, gym and treatment rooms (entrance fee c. 20 Euros per person) ■ Free private parking ■ 4.5km from San Gimignano.

### Guideline price £ per person - 7 nights

Prices based on 2-sharing a Class room, flights to Pisa with British Airways and car hire (Group A – see page 108). Single room supplement on request.

Hotel Villa San Paolo	Jan-Apr	May-Jun	Jul-Aug	Sept-Dec
	£688	£756	£850	£826

**Special Offers:** Stay 7 nights pay 6 nights all year ■ Couples celebrating their honeymoon or anniversary receive a complimentary bottle of Vernaccia sparkling wine in their room on arrival, and a complimentary room upgrade (subject to availability).

\* Offers are not cumulative.

Please refer to page 9 for details of pricing structure or telephone us for a quotation.



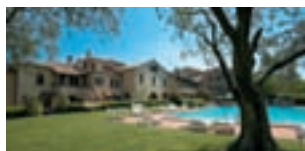
Tuscany



Tuscany

## Hotel Villa Nencini, Volterra

- Airports: 61km Pisa/92km Florence
- 3-star hotel
- Bed & Breakfast
- Outdoor swimming pool



**V**illa Nencini is a beautifully restored, 17th century stone building with stunning panoramic views of the surrounding countryside. The sunsets here are truly amazing. This charming family-run hotel, owner-managed by the Nencini family provides an ideal base from which to explore this rich cultural area.

The medieval hilltop town of Volterra is in the heart of Tuscany, close to San Gimignano (30km) and within easy driving distance of Florence (76km), Siena (57km) and the sea (42km). The walled town is an enchanting labyrinth of cobbled streets with various parks and a wide choice of restaurants and bars. Once Etruscan and later Roman, this small town is now one of the best known centres for the turning and polishing of alabaster. Volterra is much quieter than the very popular San Gimignano and a good centre for touring Tuscany.

**Accommodation:** 35 rooms all with bathroom (29 with shower, 6 with bath), hairdryer, satellite TV, WIFI internet connection (c.5

Euros for 3 hours) and telephone ■ Minibar on request ■ Rooms with balcony or terrace facing the pool on request.

**Amenities/Leisure:** Buffet breakfast ■ Restaurant ■ Bar and TV lounge ■ Wine cellar (open Mar-Oct) stocking a large selection of Tuscan wines ■ Swimming pool (10 x 20m) open May-Oct ■ Free parking ■ 10-minutes' uphill walk to the town centre.

### Guideline price £ per person - 7 nights

Prices based on 2-sharing a Standard room, flights to Pisa with British Airways and car hire (Group A – see page 108). Single room supplement on request.

Hotel Villa Nencini	Jan-Apr	May-Jun	Jul-Aug	Sept-Dec
	£620	£623	£642	£623

Please refer to page 9 for details of pricing structure or telephone us for a quotation.

## Le Fonti A San Giorgio, Montespertoli

- Airports: 30km Florence/60km Pisa
- Agriturismo
- Bed & Breakfast (BB)
- Self Catering (SC)
- Outdoor swimming pool
- Air-conditioning



**S**tanding on the hill of San Lorenzo, overlooking the Tuscan countryside, Le Fonti A San Giorgio has been managed by the Giovannelli family for three generations. The old farmhouse has been divided into seven Tuscan styled apartments, whilst the old chapel, now known as the Inn, is situated 100m away and has been renovated into fifteen rooms, each retaining original features and overlooking the valley. Guests can dine in the traditional restaurant offering local dishes, and for those with a keen interest in food, cooking lessons as well as workshops on wine tasting techniques can be arranged locally. This is also an ideal base for nature lovers as walks can be enjoyed via the many paths which lead into the forest.

### The Inn:

**10 Standard Rooms – BB (sleeps 2):** Located on either the ground or first floor of the Inn, each room has a double bed, bathroom (shower), TV, hairdryer, air-conditioning and outdoor area. Some rooms will accommodate a single bed for an adult or a child.

### The Old Farmhouse: Apartments - SC

**Ginestre (sleeps 2+1):** One double bedroom, bathroom (shower), living room with fireplace, single sofa bed, TV, kitchenette (4 gas hobs, electric oven, kettle and fridge-freezer) and private garden with table and chairs. Located on the 1st floor and accessed via a staircase from the garden, this apartment is ideal for couples.

**Bouganville (sleeps 2+2):** One double bedroom, bathroom (shower), living room with fireplace, double sofa bed, TV, kitchenette (4 gas hobs, electric oven, kettle and fridge-freezer) and private veranda with table and chairs. Located on the ground floor.

**Siepe & Gerani (sleeps 4):** Two double bedrooms, bathroom (shower), living room with fireplace, TV, kitchenette (4 gas hobs, electric oven, kettle and fridge-freezer) and private outdoor area with table and chairs. Siepe is a duplex unit and Gerani is on the first floor.

**Gelsomino (sleeps 4+1):** Two double bedrooms (one with an extra single bed), bathroom (shower), living room with fireplace, TV, kitchenette (4 gas hobs, electric oven, kettle and fridge-freezer) and outdoor area. Located on the ground floor.

**Piscina & Roseto (sleeps 4+2):** Two double bedrooms, bathroom (shower), living room with fireplace, double sofa bed, TV, kitchenette (4 gas hobs, electric oven, kettle and fridge-freezer) and private outdoor area with table and chairs. Piscina is located on the ground floor and Roseto on the first floor.

**Minimum stay (SC):** 7 nights

**Arrivals (SC):** Saturdays

**Open:** 06Mar11

**Amenities/Leisure:** Buffet breakfast (standard rooms only)

■ Breakfast for self catering guests available at a supplement ■ 82 hectares estate including 12 hectares of vineyards ■ Restaurant with views over the vineyards ■ Wine tasting and tours of the farm and cellar available on request (payable locally) ■ Two swimming pools (4 x 11m and 7 x 11m) - open May-Sept ■ Gazebo with dining table and barbecue for guests use ■ Children's play area (swing and slide) ■ Table tennis ■ Lawn area with volleyball court ■ Tennis court, football field, golf course and horse riding school all within a short drive ■ 5-minute drive to Montespertoli ■ Free parking.

### Guideline price £ per person - 7 nights

Prices based on 2-sharing a Standard room or 1-Bedroom apartment, flights to Pisa with British Airways and car hire (Group A – see page 108). Single room supplement on request.

Le Fonti A San Giorgio	Mar-Apr	May-Jun	Jul-Aug	Sept-Dec
Standard room	£639	£642	£753	£691
Ginestre or Bouganville	£517	£518	£738	£623

Please refer to page 9 for details of pricing structure or telephone us for a quotation.



## Hotel Athena, Siena

- Airports: 68km Florence/170km Pisa
- 4-star hotel
- Bed & Breakfast
- Air-conditioning

Located in a quiet area within the city walls and near the city gate of Porta San Marco, the Hotel Athena is the ideal choice for a city break or as part of a fly-drive holiday. This four star hotel is tastefully decorated throughout in either classic or modern style and the rooms are spacious and well equipped. Guests can enjoy the fabulous sunsets from the panoramic terrace affording fine views beyond the medieval city walls towards the surrounding Tuscan countryside.

Five hundred metres from the Hotel Athena, is the Piazza del Campo, considered one of the greatest medieval squares in Europe, and home to the renowned Sienese Palio.

**Accommodation:** 100 air-conditioned rooms including single rooms, standard rooms, triple rooms and superior rooms ■ All rooms have bathroom (bath or shower), telephone, satellite TV and minibar ■ Superior rooms will accommodate an extra bed for a child ■ Some rooms have a balcony.

**Amenities/Leisure:** Buffet breakfast ■ Restaurant (à la carte) serving Tuscan specialities and international dishes ■ Bar ■ Lounge ■ WIFI internet connection (payable locally) ■ Panoramic terrace affording fine views of the surrounding countryside ■ Lift ■ Free parking.

**Minimum stay:** 3 nights between 23-25Apr11, 01-02Jul11 and 13-16Aug11

### Guideline price £ per person - 7 nights

Prices based on 2-sharing a Standard room, flights to Pisa with British Airways and car hire (Group A – see page 108). Single room supplement on request.

Hotel Athena	Jan-Apr	May-Jun	Jul-Aug	Sept-Dec
	£625	£762	£705	£762

**Special Offers:** Couples celebrating their honeymoon receive a complimentary bottle of Chianti red wine in their room on arrival ■ Stay 7 nights pay 6 nights all year. Please refer to page 9 for details of pricing structure or telephone us for a quotation.



## Hotel Palazzo Leopoldo, Radda in Chianti

- Airports: 150km Pisa/70km Florence
- Historic Hotel
- Bed & Breakfast
- Indoor swimming pool
- Air-conditioning

Centrally located in the charming medieval village of Radda in Chianti stands the Palazzo Leopoldo, a 15th century palace. The palace, surrounded by magnificent Chianti producing vineyards, has been beautifully decorated in the style of a noble Tuscan residence whilst preserving the building's original architectural features.

A rich buffet breakfast is served in an authentic 18th century kitchen and at 'La Perla' restaurant guests are invited to dine on traditional regional dishes complemented with a fine selection of Tuscan wines.

The public areas and guest rooms offer sophisticated elegance in an historical setting, together with original frescoes, terracotta floor tiles and fireplaces. An excellent choice for a short break or for a longer duration.

**Accommodation:** 19 air-conditioned rooms including standard rooms, superior rooms, deluxe rooms, junior suites, suites and executive suites with private balcony ■ All rooms are individually decorated with antique furnishings and many with wood beamed ceilings and original features ■ All rooms have bathroom (hydro-massage shower), hairdryer, telephone, satellite TV, minibar and internet connection ■ Superior rooms, deluxe rooms, junior suites and suites will accommodate an extra bed for an adult or child.

**Amenities/Leisure:** Buffet breakfast served on the terrace during the summer months ■ WIFI internet connection in the public areas ■ Safe deposit box at reception ■ Indoor heated pool with a small fitness area ■ Wellness centre with sauna and treatment rooms ■ Panoramic terrace 'La Perla del Palazzo' restaurant serving regional cuisine ■ Private chapel ■ Not suitable for people with walking difficulties as there are many steps and no lift ■ 15-minutes' drive from Castellina in Chianti, 30-minutes' drive from Siena and 40-minutes' drive from Florence ■ Private free parking.

**Open:** 11Feb11

### Guideline price £ per person - 7 nights

Prices based on 2-sharing a Standard room, flights to Pisa with British Airways and car hire (Group A – see page 108). Single room supplement on request.

Hotel Palazzo Leopoldo	Jan-Apr	May-Jun	Jul-Aug	Sept-Dec
	£695	£781	£758	£781

**Special Offers:** Couples celebrating their honeymoon receive a complimentary bottle of Prosecco in their room on arrival ■ Stay 6 nights pay 5 nights between 21Apr-18Jun11 and 01Sep-01Nov11 ■ Stay 5 nights pay 4 nights between 11Feb-20Apr11, 19Jun-31Aug11, 02Nov-28Dec11 ■ Clients staying in a Superior room for 3 nights or longer, receive a complimentary evening meal per person (drinks excluded). Please refer to page 9 for details of pricing structure or telephone us for a quotation.





Siena



Val d'Orcia



## Fattoria Corsignano, Corsignano

- Airports: 73km Florence / 173km Pisa / 270km Rome
- Agriturismo
- Self Catering
- Outdoor swimming pool

This Farmhouse, beautifully restored by the present owner Elena Gallo, is located on the famous Chianti hills and offers excellent views over the town and countryside of Siena. In addition to cultivating grapes for Chianti wines, the farm also produces extra virgin olive oil, which clients are welcome to sample locally. The apartments are located in different buildings on the property but are within 100m of one another. The outdoor swimming pool and barbecue area are set in gardens by the main Villa where the owner has her apartment.

The village of Corsignano is a 10-minute uphill walk where there is a local restaurant. Guests can buy all their groceries in the village of Vagliagli (3km). For those wishing to try some of the regional cuisine, a visit to the local restaurant can be a welcome alternative.

**Accommodation:** Welcome pack included (see page 110) ■ Linen changed weekly ■ Final cleaning included ■ Some units have a toaster.

**Bottega dei Cioccolato (sleeps 4)** Ground floor: 2 double/twin rooms 2 bathrooms with shower, living room, separate kitchen (microwave, gas oven and hobs, fridge, coffee machine and dishwasher) and private garden.

**Bottega del Miele (sleeps 4+2)** First floor: 1 double/twin room and 1 twin room, bathroom (bath), living room with double sofa bed, separate kitchen (microwave, gas hobs, fridge and coffee machine) and terrace area.

**Bottega delle Fragole (sleeps 2+2)** Ground floor: 1 double room, bathroom (bath) and living room with double sofa bed, kitchenette and garden area.

**Bottega del Caffè (sleeps 2+2)** Ground floor: 1 double room, bathroom (bath) and living room with double sofa bed, kitchenette (microwave, gas hobs, fridge and coffee machine) and garden area.

**Bottega dei Dolci (sleeps 4)** First floor: 2 double rooms, bathroom (bath), living room with kitchenette (microwave, electric hobs, fridge and coffee machine) and terrace area.

**Bottega degli Aromi (sleeps 2+2)** Ground floor: 1 double/twin room, bathroom (shower) and living room with double sofa bed, kitchenette (microwave, gas hobs, fridge and coffee machine) and garden area.

**Bottega dei Profumi (sleeps 2+2)** Ground floor: 1 double/twin room, bathroom (shower) and living room with double sofa bed, kitchenette (microwave, gas hobs, fridge and coffee machine) and garden area.

**Bottega delle Erbe (sleeps 4)** Ground floor: 2 double/twin rooms, bathroom (shower) and living room with kitchenette (microwave, gas hobs, fridge and coffee machine).

**Bottega delle Spezie (sleeps 4+2)** Ground floor: 2 double/twin rooms, bathroom (shower) and living room with double sofa bed, kitchenette (microwave, gas hobs, fridge and coffee machine) and garden area.

**Minimum stay:** 3 nights

**Amenities/Leisure:** Outdoor swimming pool (6 x 14m) open May-Sep ■ Gardens with barbecue area ■ 22 hectare estate ■ Walking trail around the estate (c.1 hour 15-minutes walk) ■ Mountain bikes can be hired locally ■ Wine tasting and a tour of the vineyards can be arranged locally ■ Cooking courses, in the former lemon-house, are available on request and arranged locally ■ Excursions to the towns of San Gimignano, Pienza, Montepulciano and Volterra can be arranged locally ■ 10-minutes' walk to the closest restaurant in the village of Corsignano ■ 9km from Siena ■ 47km from San Gimignano ■ 60km from Florence.

### Guideline price £ per person - 7 nights

Prices based on 2-sharing a 1-bedroom apartment, flights to Pisa with British Airways and car hire (Group A – see page 108). Single room supplement on request.

Fattoria Corsignano	Jan-Apr	May-Jun	Jul-Aug	Sept-Dec
1-bed apt – Bottega delle Fragole	£635	£656	£727	£656

Please refer to page 9 for details of pricing structure or telephone us for a quotation.



## Villa Bellaria, Campagnatico

- Airports: 168km Pisa/142km Florence/195km Rome Fiumicino
- Agriturismo
- Bed & Breakfast (BB)
- Self Catering (SC)
- Swimming pool

**D**ating from the 19th century, this villa was once the noble country home of the Aldobrandeschi and Medici families. Today, the villa and estate are home to Luisa Querci della Rovere, who along with her husband offer a warm welcome to their guests. There are 4 bedrooms within the main villa and a further 6 self-catering apartments located within the carefully restructured outbuildings of the property. Three apartments are located within the old stables (Scuderia) and 3 within the old lemon conservatory (Limonaia). All the accommodation has been beautifully furnished in country style and well equipped to provide a home from home in the southern Tuscan countryside.

### Main Villa (BB)

4 rooms including 1 suite, all with double/twin beds and bathroom (shower). The suite has two double bedrooms.

### Scuderia (SC)

**Three 2-bedroom apartments (sleeps 4):** 2 twin/double bedrooms with bathroom (shower), living area and kitchenette (4 gas hobs and fridge-freezer). 1 apartment also has an electric oven. The apartments are both situated on the 1st floor.

**One 1-bedroom apartment (sleeps 2+2):** 1 twin/double bedroom with bathroom (shower), living area with double sofa bed and kitchenette (4 gas hobs, electric oven and fridge-freezer). This apartment is situated on the 1st floor.

### Limonaia (SC)

**Three 1-bedroom apartments (sleeps 2+2):** 1 twin/double bedroom with bathroom (shower), living area with double sofa bed and kitchenette (4 gas hobs and fridge-freezer). The apartments are situated on the ground floor and each enjoys a small private garden with views to the park.

**Notes:** Includes welcome pack (see page 110) ■ Weekly linen change included ■ Final cleaning included.

**Minimum stay:** 2 nights and 3 nights between 03-10Apr11 and 03Jul-21Aug11.

**Amenities/Leisure:** Swimming pool (14 x 7m) open May-Sep ■ 4-hectare park ■ 3 restaurants within the village of Campagnatico (within walking distance) ■ 35km to the beach on the shores of the Maremma Nature Reserve ■ Free parking.

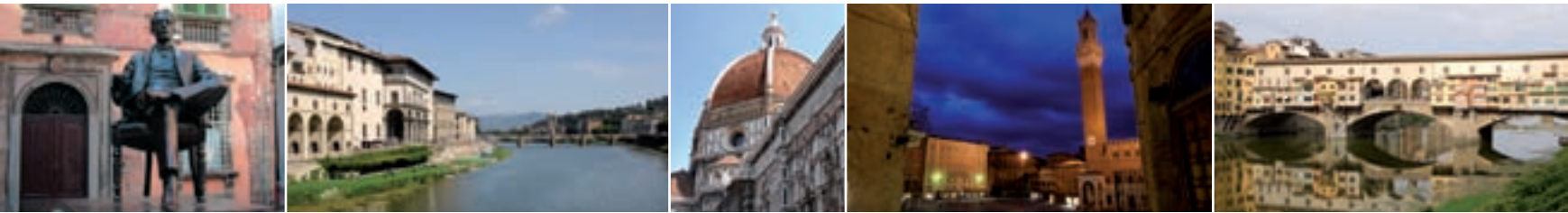
### Guideline price £ per person - 7 nights

Prices based on 2-sharing a 1-bedroom apartment, flights to Pisa with British Airways and car hire (Group A – see page 108). Single room supplement on request.

Villa Bellaria	Jan-Apr	May-Jun	Jul-Aug	Sept-Dec
Standard room	£561	£563	£596	£563
1-bedroom apartment - Limonaia	£539	£577	£691	£541

Please refer to page 9 for details of pricing structure or telephone us for a quotation.





## Florence

The view from the peak of Piazzale Michelangelo across the River Arno is truly magnificent. Minutes or hours could be spent absorbing the scene – particularly beautiful at sunset. From the viewpoint the primary sites of the city are visible: the Ponte Vecchio (bridge), the Duomo (cathedral) and the Palazzo Vecchio.

Our highlights of this UNESCO World Heritage Site are:

### The Uffizi Gallery

Located in the heart of Florence, the Uffizi gallery is renowned as one of the world's finest art museums. Works by Michelangelo, Leonardo, Botticelli, Bellini, Giorgione and Botticelli to name but a few are on display. Advance reservations for this museum are recommended – [www.polomuseale.firenze.it](http://www.polomuseale.firenze.it). Sunvil Discovery can make advance reservations for clients who book a private tour of the city.

### Accademia gallery

Whilst touring Florence you will see many imitations of Michelangelo's statue of David but, it is the Galleria dell'Accademia that possesses the true original. The gallery also houses a collection of paintings by Florentine artists and numerous sculptures. Advance reservations for this museum are recommended – [www.polomuseale.firenze.it](http://www.polomuseale.firenze.it). Sunvil Discovery can make advance reservations for clients who book a private tour of the city.



Michelangelo's 'David'

### Duomo

Florence's skyline is dominated by its cathedral, one of the largest Christian buildings in the world. Up close the Piazza del Duomo, home to the cathedral, bell tower and baptistery, demonstrate the progression of Florentine art from the Middle Ages to the Renaissance. Climb to the top of Brunelleschi's dome or Giotto's bell tower for a magnificent panorama.

## Excursions in Florence

The following excursions can be pre-booked for clients staying in Florence. Private excursions can be tailored to suit individual requirements and interests on request.

Private excursions:	Price (per person)*
4-hour city tour by private car inclusive of English speaking driver	£100
8-hour city tour by private car inclusive of English speaking driver	£172
3-hour private walking tour with English speaking guide	£109
6-hour private walking tour with English speaking guide	£212

\* Based on 2 passengers travelling. Reduced rates apply for larger parties. Single supplement on request.

Regular excursions:	Price (per person)*
3-hour tour of Florence including Piazzale Michelangelo, the cathedral and the Accademia gallery (09:15 daily)	£49
3-hour tour of Florence including Fiesole, the Church of Santa Croce and Uffizi gallery (14:15 daily)	£49
8-hour of Florence including Piazzale Michelangelo, the Duomo Accademia gallery, Fiesole, the Church of Santa Croce and the Uffizi gallery.	£109
A light lunch is included. (09:15 daily)	£38
1-hour tour of the Accademia gallery (11:15 Tues-Sun)	£38
1-hour tour of the Uffizi gallery (16:15 Tues-Sun)	£38

## Puccini Music Festival

In Torre Del Lago, on the quiet shores of Lake Massaciuccoli, 18km from Lucca and Pisa, Giacomo Puccini composed some of his most highly acclaimed and renowned operatic pieces; La Boheme, Tosca, Madame Butterfly and La Rondine.

The Puccini Music Festival was founded in 1930 following Puccini's wishes to hear one of his opera's in the open air. Today, the month-long festival, celebrating the life and works of Puccini, has grown in stature and now welcomes about 40,000 spectators to Torre Del Lago and its openair theatre.

Throughout the festival's 80 year history the stage has hosted some of the most distinguished names in the world of opera including Luciano Pavarotti, Placido Domingo, Jose Carreras and Andrea Bocelli. Opera is considered the most complete and varied form of theatre. Why not experience the emotional drama for yourself? Sunvil Discovery can arrange tickets to the Puccini Music Festival, accommodation in Lucca – Puccini's birthplace – and transfers or car hire to the event.

### Performances in 2011

**La Boheme**  
Friday 22 July  
Saturday 30 July  
Friday 12 August  
Saturday 20 August  
Saturday 27 August

**Turandot**  
Saturday 23 July  
Friday 29 July  
Sunday 7 August  
Saturday 13 August  
Friday 26 August

**Madame Butterfly**  
Saturday 6 August  
Thursday 11 August  
Thursday 18 August



Stage

Prices for the opera performances:

Seating	Price per ticket
Gold	£158
1st sector	£127
2nd sector	£90
3rd sector	£59
4th sector	£33

## Tailor-made holidays in Tuscany

Tuscany boasts an evocative landscape where medieval towns, rolling hills with slender cypress trees, olive groves and vineyards stand side-by-side. Rail links connect the cities with the major towns in Tuscany – Lucca, Siena, Arezzo, Grosseto, Livorno – and bus routes offer access to the hilltop towns of San Gimignano and Volterra but, to truly experience the Tuscan countryside, and appreciate the Chianti wine region, car hire is essential.

We have outlined a fly-drive itinerary below, but remember that this is merely a suggestion and can be modified to suit individual requirements. Please feel free to construct your own itinerary from our featured properties and telephone us for a quotation. It is even possible to combine Tuscany with the Veneto, Umbria, Lazio and beyond.

### Tuscany - 12 nights

Using direct scheduled flights from London Gatwick to Pisa and including 12 days car hire (airport to airport).

Nights	Accommodation	Location
3	Hotel Ilaria	Lucca (p 34)
3	Hotel Villa San Paolo	San Gimignano (p 36)
3	Hotel Palazzo Leopoldo	Radda in Chianti (p 38)
3	Hotel Villa Marsili	Cortona (p 33)