

## TOUR DETAILS

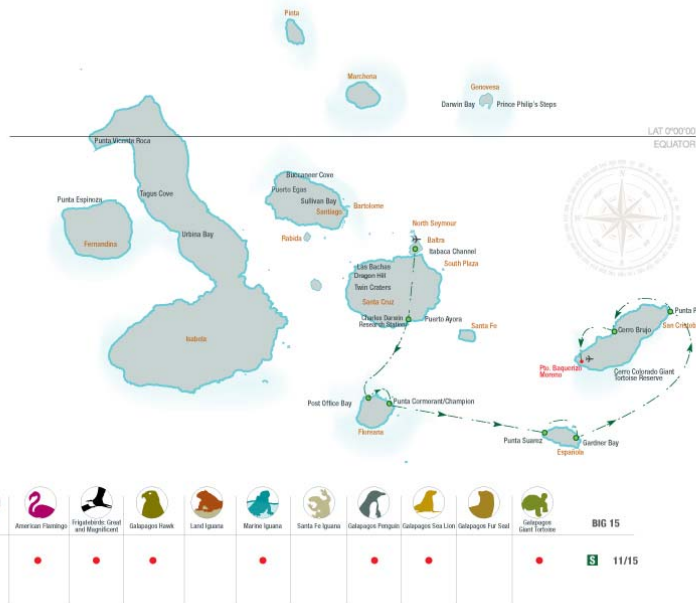
### Tour Name

YACHT ISABELA II Southern Islands 5Days/ 4Nights (Friday to Tuesday)

### Description

Our itinerary together begins on Santa Cruz Island, the most populous in the archipelago. Here, we first explore the highlands of the islands with their lush vegetation before venturing down to the world-famous Charles Darwin Research Station to meet giant tortoises face to face. After embarking at the end of the day, we sail south to the island of Floreana, where we disembark at Post Office Bay in the morning and Punta Cormorant in the afternoon. Both are full of life and history. Next, we head west to Española Island, with its remarkable visitor site: Punta Suarez. Here, we'll wander along the rugged coastline, home to hundreds of marine iguanas, sea lions, marine birds, and even albatross (at certain times of year). In the afternoon, Gardner Bay provides a wonderful setting for a combination of beach-time, swimming, snorkelling or exploring aboard the glass-bottom boat. San Cristobal Island is next, the capital of the Galapagos Province. We explore the northern shores of the island, visiting the fascinating sites of Punta Pitt and Cerro Brujo, taking us back to the young Charles Darwin's visit of 1835. We end our journey at Puerto Baquerizo Moreno.

	AM VISITS	ISLAND	Aquatic Activities	PM VISITS	ISLAND	Aquatic Activities	Highlight
Friday	Baltra Airport	Baltra Island		Charles Darwin Research Station	Santa Cruz Island		Floreana Española
Saturday	Post Office Bay	Floreana Island	  	Punta Cormorant & Champion Islet	Floreana Island	 	
Sunday	Punta Suarez	Española Island		Gardner Bay	Española Island	  	
Monday	Punta Pitt	San Cristobal Island	  	Cerro Brujo	San Cristobal Island	 	
Tuesday	Puerto Baquerizo Moreno Airport	San Cristobal Island					



**DAY BY DAY ITINERARY**

**Day 1 - SANTA CRUZ / BALTRA** (-/L/D)

Friday: AM Arrival at Baltra airport / PM Highlands of Santa Cruz: Walk through the highlands, stroll along the main street of Puerto Ayora, shopping opportunities, welcome cocktail and dinner.

**Day 2 - FLOREANA** (B/L/D)

Saturday: AM Post Office Bay: Snorkelling, panga ride / PM Punta Cormorant & Champion Islet: Snorkelling, panga ride, glass-bottom boat ride.

**Day 3 - ESPAÑOLA** (B/L/D)

Sunday: AM Punta Suarez: Walk / PM Gardner Bay: Snorkelling, panga ride, glass-bottom boat ride, kayaking, swimming.

**Day 4 - SAN CRISTOBAL** (B/L/D)

Monday: AM Punta Pitt: Walk, snorkelling, swimming, kayaking, panga ride / PM Cerro Brujo: Snorkelling, panga ride, swimming.

**Day 5 - SAN CRISTOBAL** (B/-/)

Tuesday: After breakfast, we depart to the pier and airport for our flight back to the mainland

**ITINERARY DESCRIPTION**

**Day 1 - SANTA CRUZ / BALTRA** (-/L/D)

### **Baltra Island Airport & Santa Cruz Island**

We arrive at Baltra airport and then we take you to the Itabaca Channel to take a ferry across to Santa Cruz Island. A 30-minute bus ride takes us to a restaurant in the highlands of Santa Cruz Island to enjoy lunch, and then continue to Puerto Ayora. Depending on local weather conditions up in the highlands, we may include a short hike which will be a great introduction to some Galapagos wildlife. Our Expedition Team will advise accordingly.

**Note:** Please dress with comfortable shoes and clothes, bring a small backpack with any medicine you might be taking, sunblock, insect repellent and anything you need during the excursion as you will go on board Yacht Isabela II and the end of the day.

### **Puerto Ayora and the Charles Darwin Research Station**

After driving down from the highlands, we visit the Charles Darwin Research Station and the giant tortoise pens within an impressive giant prickly-pear cactus forest home to many land birds. These are the headquarters of scientific investigation, conservation and the National Park administration. Late afternoon we stroll along the main street of Puerto Ayora before embarking on Yacht Isabela II. We review the expeditions plan for next day, and enjoy the Captain's welcome cocktail and dinner.

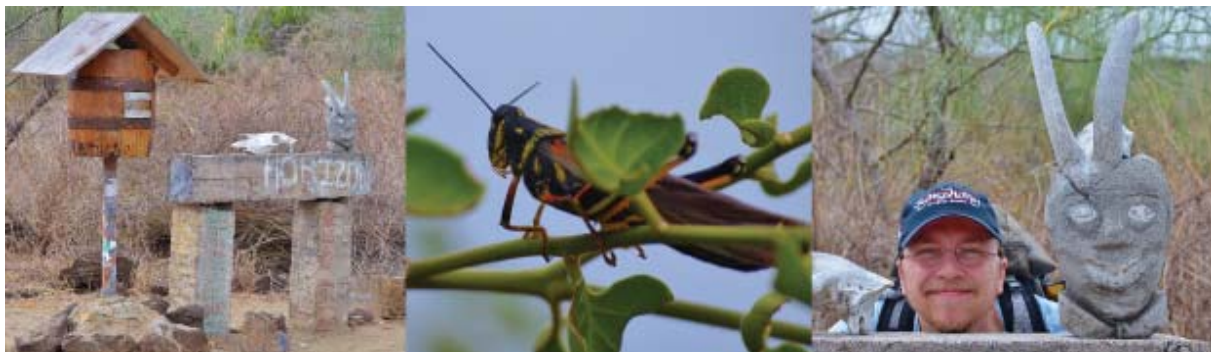


### **Day 2 - FLOREANA**

(B/L/D)

#### **Post Office Bay & Baroness Cove (Floreana Island)**

After breakfast, we land at Post Office Bay to visit the historic barrel that has served as an informal post office in the archipelago for over two centuries. Snorkelling off the beach.



### **Punta Cormorant (Floreana Island)**

Our visit to Punta Cormorant takes in an olivine-crystal beach for an easy walk by a brackish water lagoon where bird species like stilts and flamingos may be observed. On the other side of the island, we come to a white-sand beach where sea turtles come out at night to nest. Snorkeling will happen at lovely "Champion Islet" site, or ride in the panga or glass-bottom boat.



### **Day 3 - ESPAÑOLA**

(B/L/D)

#### **Punta Suarez (Española Island)**

Our morning outing at Punta Suarez provides an exciting walk on lava/boulder terrain to visit its unique sea bird colonies, including the waved albatrosses (April - January), boobies, swallow-tail gulls, mockingbirds, and the famous "blowhole". Also, look for red-green-black marine iguanas. Back on board for lunch.

#### **Gardner Bay (Española Island)**

In the afternoon, we set down at this beautiful, white coral beach for a short walk to observe Galapagos sea lions, finches, maybe a hawk or just enjoy the beach. There is great snorkelling in this area, or else there's time to kayak, or enjoy the glass-bottom boat. The turquoise colour of the waters at this location will be a favourite one to photograph.



#### Day 4 - SAN CRISTOBAL

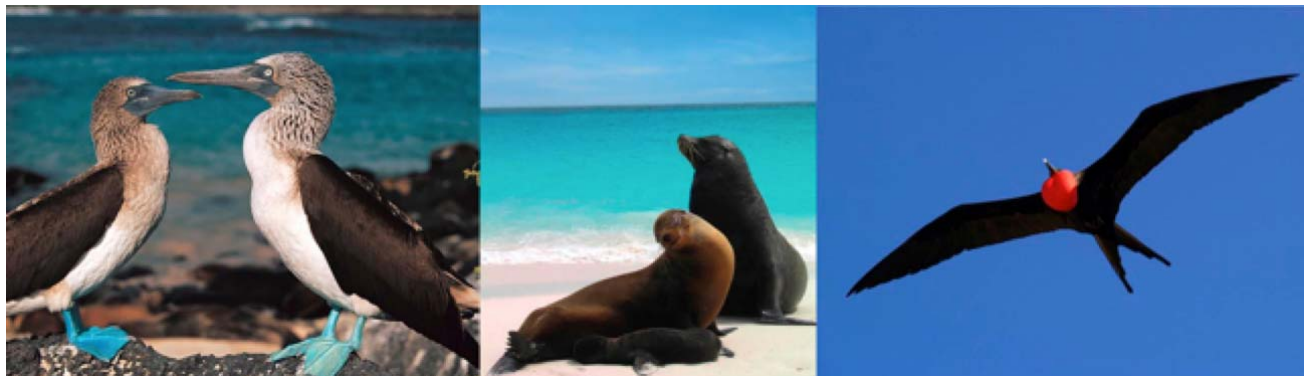
(B/L/D)

##### Monday: Punta Pitt (San Cristobal Island)

In the morning, we land on the eastern tip of the island. The trail that ascends from the beach provides spectacular views of the shoreline and is the only site in the Galapagos where the three species of boobies can be found together, joined by the two frigatebird species plus a colony of bachelor sea lions. After the walk, if conditions are favourable, there is a chance to swim, kayak or snorkel from the beach or hop onto the panga for a ride along the coast.

##### Cerro Brujo (San Cristobal Island)

In the afternoon, following lunch on board, we set out on a panga ride along the shores of tuff-stone layers which take us to Cerro Brujo's expansive, white coralline beach, great for walking, with rewarding birdwatching including good views of both sea and shore birds. Also, keep your eyes open for Galapagos sea lions. These are the same shores that Charles Darwin walked upon, back in September 1835. After the walk, there is a chance to swim and snorkel.



#### Day 5 - SAN CRISTOBAL

(B/-)

##### Tuesday: Puerto Baquerizo Moreno (San Cristobal- Chatham Island)

After breakfast, we depart to the pier and airport for our flight back to the mainland.

#### Notes

- Please remember that the exact route and programme may vary according to weather and ocean conditions and the wildlife we encounter. Our Expedition Team is in charge of planning the daily activities and logistics involved. It's also subject to change without previous notice due mainly to readjustment of the National Park policies and regulations.

For accessing the different visitor sites, our skiffs will bring us ashore where two types of landing are expected:

**Dry landing:** Guests step from the panga (dinghy/skiff) onto rocks or a small man-made jetty.

**Wet landing:** As the skiff edges onto a sandy beach, guests gently step into small breakers and wade ashore.

**Recommendations**

- 1 Small backpack
- Comfortable walking shoes
- Sneakers with rubber soles
- Shorts
- Long pants
- T-shirts
- Long and short sleeved shirts
- Wind breaker
- Bathing suit – wetsuit for snorkelling in cold months (also available for on board rental)
- Hat or cap
- Toilette kit (biodegradable shampoo please)
- Sun block SPF30 or higher
- Sunglasses (polarized glasses recommended)
- Binoculars (8 x 42 recommended)
- Photo & video equipment
- Any medicine you may be taking
- Book / notebook

**Included**

All meals, island sightseeing, naturalists and lecture services, wi-fi internet access\*, snorkelling gear and transfers.

**Not Included**

Air tickets to/from Galapagos, Galapagos National Park admission fee (US \$100 subject to change without notice), transit Control Card for Galapagos (US\$ 20 per person), wet suits, alcoholic and non-alcoholic beverage, tips, gifts, and additional items of personal nature.

\* Due to the Galapagos' remote location, internet signal follows a low-bandwidth satellite service and may be intermittent at certain locations.